

Imagine



Annual Report
2019/20

Contents

Objectives & activities	2
Achievements & performance	4
Working with schools to develop a culture of arts-based learning	7
Supporting artists, freelancers and the sector	11
Championing access and diversity	16
Working with Partners	19
Future plans	20
Financial review	23
Our supporters	25

Objectives & activities

Who we are

Imagine is the national organisation in Scotland which promotes, develops and celebrates theatre and dance for children and young people.

Why we exist

Imagine's purpose is to improve and enrich the lives of children and young people. Experiencing high-quality theatre and dance develops children's confidence and self-expression, broadens horizons, and can raise aspirations. Unfortunately, access to the arts is not equal for all children in Scotland. Disabled children, and those from poorer backgrounds, face particular barriers. We believe that all children deserve the opportunity to develop their creativity, emotional intelligence and reach their true potential. We work to make this a reality.

What we are trying to do

Our mission is to promote, develop and be an advocate for theatre and dance for children and young people, so that more children from all backgrounds in Scotland can access and enjoy more high-quality theatre and dance, more often.

How we do it

Our work falls into three strands:



Valentina's Galaxy by Frozen Charlotte.

The Edinburgh International Children's Festival

An annual celebration of the world's best theatre and dance for young audiences. Quality performances specially designed for school settings.



Artist residency with Eoin McKenzie & Gudrun Soley Sigurdardottir.

Schools' programme

A year-round Schools programme to develop children and teachers' creativity, including Immerse: a 3-year programme working in 6 schools in some of Edinburgh's poorest areas. The schools programme also includes Theatre in Schools Scotland (TiSS), a national touring programme in partnership with National Theatre of Scotland, that brings high-quality performances specially designed for school settings.



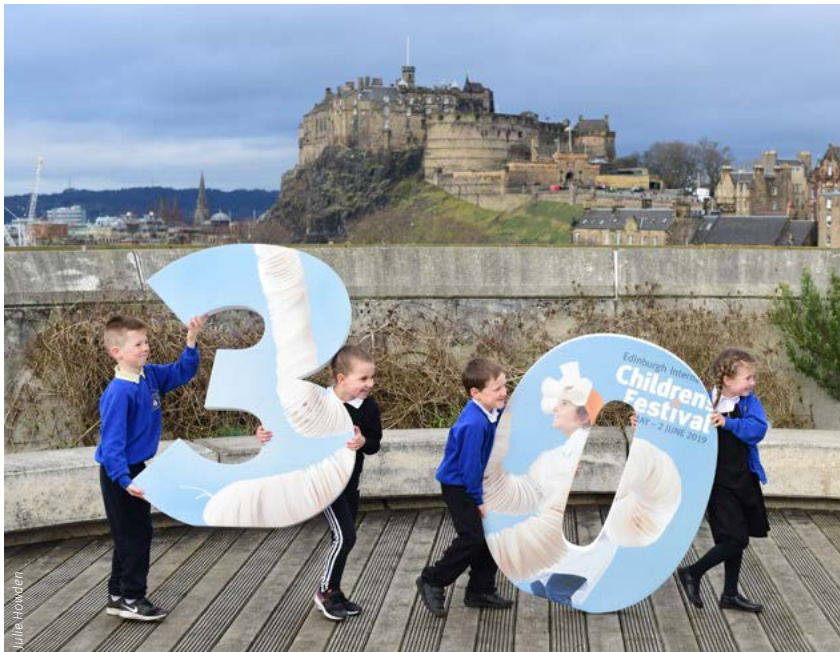
Epic Fail by Emma Jayne Park.

Artists support programme

A year-round programme to support and inspire artists and freelancers who make theatre and dance for children.

Inspiring children with high-quality performances

2019 Edinburgh International Children's Festival



Launching the 30th Anniversary programme.

The Edinburgh International Children's Festival showcases some of the world's best theatre and dance for children with performances that are deeply engaging, innovative and inspiring. With an emphasis on striking visual productions, the international programme continuously goes beyond expectations of children's work.

In 2019, it celebrated its 30th birthday. Highlights included:

- ★ A bumper programme of 15 shows from 8 different countries
- ★ An exceptional three-week run of Punchdrunk's immersive production *Small Wonders*
- ★ A reception in the Scottish Parliament to celebrate 30 years of the festival
- ★ The launch of a new interactive digital timeline and archive, recording details of all Children's Festival since 1989
- ★ The premiere of *Playful Tiger*, a sell-out show by Barrowland Ballet created for children with profound autism



15,620

tickets issued



54%

of attending schools came from the **30%** most deprived areas in Scotland



320

industry professionals attending from **25** different countries



2

touring commissions



10,600

footfall at Family Day, around **30%** of whom were there specifically for our activities



Ruth Armstrong

Pop by Vince Virr.



Stephen Dobbie

Small Wonders by Punchdrunk

“The children were completely engrossed. We were happy, amazed and emotional all at the same time. I cannot recommend this show highly enough. It deals with such a complex subject and delivers it in a way of absolute wonder”

Teacher, Davidson's Mains Primary

Theatre in Schools Scotland (TiSS)

Since 2016, TiSS has brought some of Scotland's best productions for young audiences to schools across the country, reaching even the most geographically isolated communities.

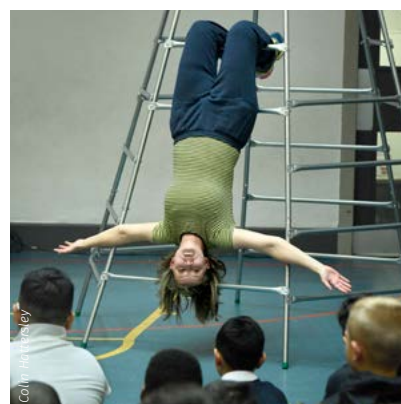
Theatre in Schools Scotland is unique in that:

- ★ Its programme is informed by input from teachers and selected from some of the best Scottish performing companies specialising in theatre and dance for children and young people.
- ★ It reaches every local authority in Scotland
- ★ It raise the quality of theatre and dance performances shown to children in schools
- ★ It is specially designed to support teachers and suit schools settings
- ★ It works with councils, touring networks and theatre venues to support performances in small rural schools and helps build audience interest in theatre across Scotland.



“What an inspiration! Thank you so much for a very valuable, entertaining and educational performance. It was phenomenal. I’m sure that I will get a lot of mileage out of this stimulating experience and use it to cover many more outcomes across the curriculum.”

Teacher, Alehousewells Primary, Aberdeenshire
on *Is This A Dagger*



My Friend Selma by Victoria Beesley



Working with schools to develop a culture of creative learning

This year, Imagine's work in schools blossomed thanks to PLACE funding from the Scottish Government and the City of Edinburgh Council. It enabled us to:

- ★ Work in depth with 6 schools in areas of deprivation (Immerse programme)
- ★ Partner with world renowned Punchdrunk Enrichment
- ★ Introduce 15 new schools to Theatre in Schools Scotland and the Children's Festival (Explore programme)
- ★ Pilot a Teachers' Theatre Club in partnership with the Fringe Festival
- ★ Create the new post of Schools Project Manager

As well as these exciting new developments, we continued to deliver an artist-led creative learning project for schools around the Children's Festival (Project This Girl), and we supported two artist residencies in schools (outwith the Immerse programme), exploring themes such as the relationship between boys and men and children's experience of disability.



Immerse

Immerse is a ground-breaking programme which embeds high-quality theatre, dance and creativity in schools who need it most. The project is developing a long-term relationship with 6 primary schools located in some of the poorest areas of Edinburgh including Brunstane, Muirhouse and Wester Hailes.

Every year, for three years, each school experiences the following:

- ★ An immersive theatre adventure, where the normal school environment is transformed into a place of mystery and wonder.
- ★ A 10-week artist residency, where 2 artists work with a full year group to explore particular topics or themes, developing pupils' creativity, confidence and self-expression.
- ★ A visit to a Children's Festival Performance, with subsidised transport available to every pupil
- ★ A 4-day, artist-led creative learning project, where children explore complex themes from a production they have seen and learn to formulate their own responses
- ★ A programme of CLPL training for teachers, giving them confidence and skills in arts-based learning



"Some of our schoolchildren don't experience much magic or wonder in their lives, and some get very little chance to be carefree children. Immerse has brought magic, wonder, joy and excitement to all our pupils."

Angela Burgess, Deputy Head, St David's Primary School

"It was so important for the children to be a part of a creative process, to access a quality arts programme at their own levels and to celebrate their community through this. Watching their creativity and confidence soar was an absolute joy to witness as their teacher"

P6 teacher, Canal View Primary



The project kicked off with *The Lost Lending Library* project (LLL): a spectacular 3-week adventure for the whole school community, from the masters of immersive theatre, Punchdrunk. Following a seemingly routine visit to the school from the “Library Services”, a room in the school vanishes, replaced by an antique bookshelf. Over the course of a week, children are let inside the bookshelf in small groups and are inspired to become this magical library’s new apprentices... and create or write their own stories.

LLL exceeded everyone’s expectations in terms of the impact it had on children’s imaginations and their motivation for reading and writing.

The 10-week artist residencies were also transformational in empowering children to discover new sides of themselves, and different ways of seeing the world around them.

Over the next two years, we will continue to work with these 6 inspirational schools and deepen our relationship with their whole community.



“I got to see an entirely different side to a lot of the children. You unearthed talents and abilities I never knew they had.”

P7 teacher, Craigroyston Primary



Teachers' Theatre Club

This 3-year project is run in partnership with Edinburgh Festival Fringe to encourage teachers to see more live performance, develop their critical thinking skills, become more confident discussing them and in turn, inspire their classes to do so.

Each year, participants attend shows at the Edinburgh International Children's Festival, the Edinburgh Festival Fringe, and take part in discussions.

As well as seeing performances, teachers have the opportunity to meet some of Scotland's key industry professionals including artists, designers, programmers, critics and production staff.

Teachers taking part in the project benefit from:

- ★ Sessions counting towards professional development
- ★ Using their critical thinking skills in an arts setting
- ★ Increasing their confidence in engaging with live performing arts
- ★ Developing a network of arts and teaching professionals
- ★ Enhancing the learning experiences of their learners

“When applying to be a part of Teachers' Theatre Club, I saw it as interesting CPD. I never thought for a second that it would give me so much more. Over the course of the project I have engaged in discussions with a wide range of professionals in the arts, experienced theatre that I would never have gone to see myself and discussed how I would use these shows with my pupils. I have laughed, cried, debated and been comfortable in talking about what I have both liked and disliked. I hope this project runs for many years to come.”

Serena Jagpal, teacher,
Pentland Primary School

Supporting artists, freelancers and the sector



Which Wires What by Launchpad artist Rosa Duncan



Money Queen by Mamoru Iriguchi



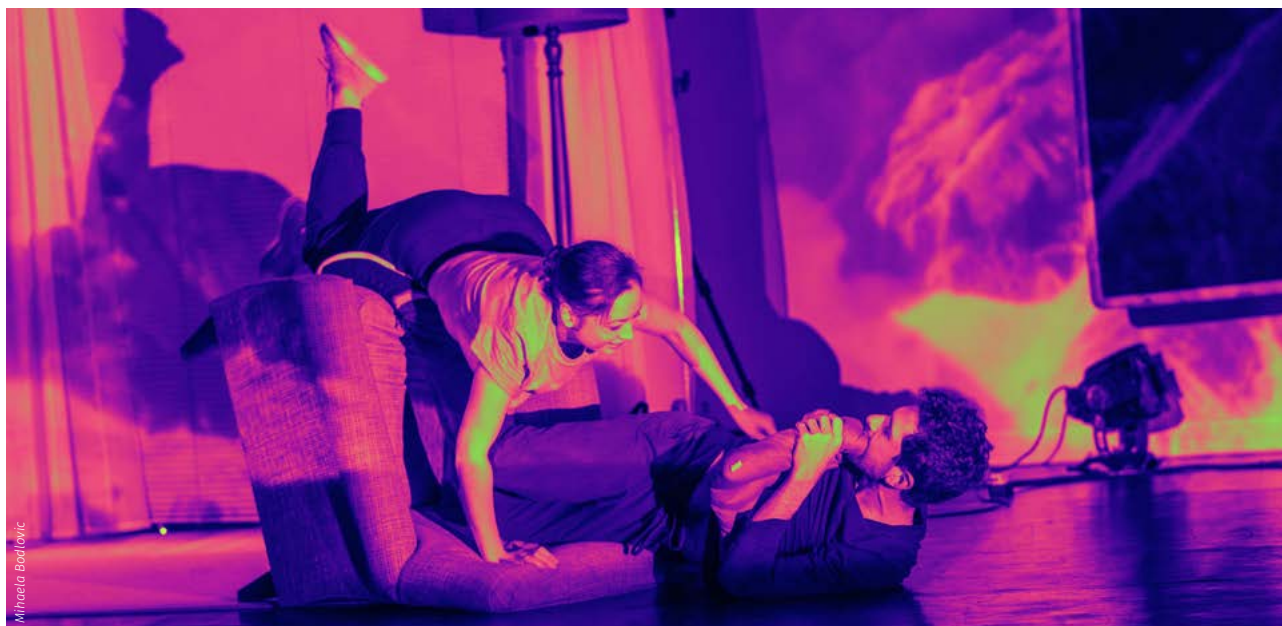
All or Nothing by Launchpad artist Eoin McKenzie

In order to develop innovative productions, artists and freelancers need practical support and space to dream. They also need to feel part of a diverse and strong young audiences sector. Through Imagine's year-round Creative Development Programme, and on-going advocacy and sector support work, we strive to build an inspiring, supportive environment for Scottish artists and freelancers who make performances for children.

Highlights of 2019-20 include:

- ★ A residency with Project X to develop *Carnival Odyssey*, a new dance performance for children
- ★ Being awarded funding from Jerwood Arts for a 2-year project supporting 4 artists to explore performance ideas for children with additional support needs
- ★ Supporting 10 artists to develop new production ideas (through Accelerator and Launchpad)
- ★ Delivering 2 artist residencies in school (and 6 more as part of Immerse)
- ★ Creating new partnerships for Imagine At residencies including 2 projects that supported new performance ideas for young audiences led by disabled artists
- ★ Presenting new ideas and works-in-progress at Scratch and Ideas Exchange
- ★ Promoting Scottish based artists to the world at the International Performing Arts for Youth Showcase in the USA

Case study: Accelerator artist Jim Manganello



The Untitled Disco Project by Shotput.

Jim is a performer, director and movement director originally from Detroit and now based in Glasgow. He is one half of Shotput (along with Lucy Ireland), a company supported by Imagine through the Accelerator programme. Shotput are working on a new dance theatre piece for young people about the intersection between teenagers, technology and sex. As part of the research process, Jim and Lucy worked with teenagers at Musselburgh Grammar (through Teachers' Theatre Club) and were to present a work-in-progress at the 2020 Children's Festival. Devised from consultations with teens about their feelings about sex in the age of Snapchat and Instagram, the show hoped to "break some taboos with humour and life".

As well as Accelerator, Jim was Lead Artist in a residency with Lyra and St Francis' Primary School, working with a group of boys of different ages to explore themes of friendship and gender expectations. 'The themes of friendship and masculinity have been stirring around my mind for several years and I was thrilled to address them theatrically with this group of young men. I hope that through the process we reminded ourselves of the shape of play, sharing and tenderness.'

Jim also worked as Immerse artist in residence in Forthview Primary School working with 60 pupils on the performative possibilities of storytelling through movement and sound, sharing, ripping-up, and joining together classic tales and their own experiences.

Jim reflects on his involvement with Imagine: "Working with Imagine gave me the opportunity to work in depth with and for young people, allowing me to reconsider some preconceptions and be fully present in my interaction with them. This has had a massive impact on how I will work with young people in the future, as I discovered that the richest material lies inside them and in the interactions among them."



Chalk About by Curious Seed

International Performing Arts for Youth Showcase

As part of an effort to promote the highly regarded children's theatre and dance sector internationally, Imagine and Creative Scotland supported a delegation of Scottish artists, producers and companies making work for young audiences, to attend the prestigious International Performing Arts for Youth (IPAY) showcase event in Philadelphia in January 2020. The showcase aims to foster dialogue amongst the global sector and promote productions to agents and managers from around the world. This was the second time that Imagine had co-ordinated a Scottish presence at the festival, and it proved to be a very successful experience for the artists and companies involved.

"It was a great opportunity for us to present our work on the North American stage, as well as for international presenters from other countries to see the show. It was also an ideal way to build on the company's reputation and cement existing relationships, as well as make new connections. Presenting a workshop also played a big part in sharing my working processes and opening conversations, as well as introducing the quality of the 'Scottish way' to a hungry and curious international sector."

Christine Devaney,
Artistic Director Curious Seed



Home Residency

EU funded project: PUSH+

In a year when the UK's relationship with Europe has been uncertain, Imagineate continues to strengthen European relationships, as Lead Partner in PUSH+, a Creative Europe-funded co-operation project with 5 partners from Ireland, Belgium, Norway, Denmark and Thailand.

PUSH+ is about artist development and transnational mobility, connecting people working in the young audiences sector.

PUSH+ aims to stimulate dialogue and initiate new artistic ideas and performances around three important topics in performance for young audiences – Home, Failure and Different Bodies. These are topics that push us to take more risks, to address the under-representation of different lives and bodies on our stages and to tell stories that really connect with children.

Highlights this year included:

- ★ **Home Residency (Hasselt, Belgium):** A 2-week residency with four artists selected to have paid time and studio space to develop a performance idea that began during the Home Lab. This Residency included Vince Virr from Scotland.
- ★ **Showbox Visit (Oslo, Norway):** Artists and partners visited the Showbox festival for a final presentation of artists, ideas and works in progress from the Home Lab and Residency.
- ★ **Failure Lab (Hasselt, Belgium):** The second Lab brought 15 artists from across the partner countries to explore the theme of Failure and what it means to artists and children right now.
- ★ **Failure Residency (Dublin, Ireland):** This 2-week residency brought together four artists selected from the Failure Lab, including Scotland-based Eoin McKenzie developing a performance idea exploring men and boys, which has now been invited to showcase in Denmark as part of SWOP Festival 2022.



“The genuine care and passion for the artists and work from the partners and their teams shone from beginning to end and it is one of the most nurturing and encouraging experiences I have had in my professional life. I have already encouraged many peers to apply for the next one!”

Artist feedback about PUSH+

Birdwoman by PUSH+ artist Rebecca Lenaerts at Showbox

The following film by Jassy Earl attempts to capture some of what happened and was learnt during the Failure Lab:



[Click to open Vimeo in your browser](#)

Championing access and diversity



Canal View residency.

Imagineate believes that all children, regardless of background and circumstance, deserve the opportunity to develop their creativity, emotional intelligence and reach their true potential through the arts.

This commitment runs through all our work.

In the past year we have had a particular focus on children from communities experiencing deprivation, and children with additional support needs.



“This programme had a huge impact on the children. All of the children participated in contemporary dance without even realising. For many this was an opportunity they wouldn’t otherwise have had. It was especially pleasing to see children who rarely participate in group discussions in class willingly and confidently taking lead roles. The project gave the children the chance to be a part of a creative process, to access a quality arts programme at their own individual level and to celebrate their community through this. Watching their creativity and confidence soar was an absolute joy to witness as their teacher.”

Teacher, Canal View Primary

Immerse: Working with schools in Edinburgh's most deprived communities

The Immerse programme aimed to embed theatre and creativity in selected schools over a three year period. Imagine partnered with six schools located in areas of high deprivation where pupils had greater social needs. 80% of pupils involved in the programme live in Scotland's most deprived areas, 20% are from a Black and Minority Ethnic communities and 45% have English as an additional language. Few of the pupils had attended the theatre with their families.

All six schools were united in having a real interest in arts-based learning and the benefits which this could bring.

The project has so far been extremely successful and Year 1 evaluation shows that:

- ★ For most pupils, the volume and nature of exposure to high quality arts was a unique or first-time experience.
- ★ There was evidence of pupils' improved confidence, team building skills and collaborative working, all transferable skills which teachers thought would have longevity well beyond the project timescales.
- ★ Schools reported that the project had had a positive whole school effect, creating an excitement and buzz that went beyond the school and out into community.
- ★ Teachers felt that the project had given them more confidence in integrating drama and the arts into their practice.

The project was adapted to suit each community's needs. For example, Imagine partnered with Barnardo's to gift jackets, hats and gloves to pupils at Canal View Primary, as over a third of children did not have sufficient warm clothes to take part in outdoor activities as part of the artist residency.

The following film captures some of the highlights from Immerse's first year:



[Click to open YouTube in your browser](#)



Children on their way to the Festival

Inspiring children with profound and complex needs

Children with profound and complex needs can often struggle to engage in an environment where audiences are expected to sit still and be quiet. In line with its mission, each year the Festival programmes a show specifically designed for them.

The 2019 Children's Festival premièred *Playful Tiger* by Barrowland Ballet, a show created for children with profound autism who are mainly non-verbal. *Playful Tiger* was developed in collaboration with children in a special school, informed by their impulses and responses, as well as the artists' observations. The show is chaotic and brilliantly fun, with a focus on sensory engagement and a two-way response between the audience and performers, facilitated by the very low capacity of just 8 young people with their families and carers.

The response to this production from parents, teachers and children was utterly joyful.

It was also very well received by industry professionals and Barrowland Ballet were approached by a number of high profile international programmers in Asia, Australia, Europe and North America, interested in potentially programming it in their own venue or festival.

Through our transport subsidy, 100% of travel costs for special schools were reimbursed, making it easier for many schools to attend.

Our commitment to accessibility was further recognised by a substantial two-year funding from Jerwood Arts, which will support 4 artists to make more work of this quality for children with complex needs.



Playful Tiger by Barrowland Ballet

'My son absolutely loved *Playful Tiger*. There are few opportunities to take him to shows as there is little provision for children with additional needs. This show was perfect, genuinely inclusive and welcoming.'
Parent

Working with Partners

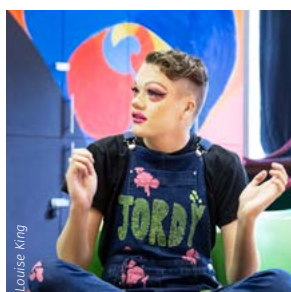
Partnership working is at the heart of what Imagineate does: pooling resources with other organisations who share our vision to reach more children from diverse backgrounds and support more artists at all stages of their careers. 2019 has been a particularly collaborative year. Some highlights include:



Eggy Ladies by Anna Chaney & Marta Soriano

Festival Family Day at the National Museum of Scotland

2019 Family Day saw the Museum transformed into a creative space for families, with pop-up performances, wandering characters, creative workshops for adults and children, dance party and much more. The programme was curated in partnership with the Museum, through a mixture of Open Call and targeted commissions supported by EXPO funding. Museum staff worked alongside Children's Festival staff and volunteers to ensure that over 10,000 visitors had an unforgettable day.



Jordy Deelight residency

Imagineate residencies at the Work Room and with Birds of Paradise

We supported 3 artist residencies, giving artists space and time to develop a new idea, with input from a creative organisation that matches their interests. The residency with Birds of Paradise gave drag performer, DJ and disabled artist Jordy Deelight the opportunity to work with Robert Softley Gale, a leading theatre-maker who puts disabled artists centre stage.



Wee Night Out

Wee Night Out

Imagineate worked with partners in Craigmillar, Granton and Wester Hailes, taking 14 teenagers in their community to attend shows at the Festival Fringe and Children's Festival. They reflected and discussed each performance, and were challenged to decide, as a group, on a favourite show from each Festival – a wonderful journey of discovery for these creative young people!

And of course, there were our partnerships with National Theatre of Scotland (TiSS), the Fringe (Teachers' Theatre Club), PUSH+, Merchant City Festival, and many more.

Future plans

In March 2020, Scotland went into lockdown in response to the Covid-19 pandemic. Like so many others, we were forced to change our plans at very short notice. The Children's Festival which was to take place in May was cancelled and so were most of our schools projects and artist development programmes.

Following an initial period of reflection, we decided to focus our efforts on supporting our community of artists, providing alternative ways to engage with schools and delegates as well as providing some inspiration for children in lockdown at home.

Short term:

Ideas Fund

This one-off funding was established to develop creative projects for children and their families to do at home, while supporting artists in the sector with paid work at a time when most of their jobs had been cancelled. Ideas were selected from a series of open call-outs and distributed online to families. These ranged from letter writing and fort building in bedrooms to creating stop motion animations and shadow-box theatre. Children affected by digital poverty and unable to access online content were also catered for with specific projects such as providing art material and instructions to create street art.

We also collaborated with National Theatre of Scotland by recommending artists' ideas which they could include while curating their programme Play Dates.



Fort Building by Niamh O'Loughlin



Small Rainbows by Sian Bevan.

Immerse

The lockdown interrupted some of the Artist Residencies taking place within the schools. In order to provide continuation and closure, artists created a range of content including films, magazines and photographs representing the outcomes of their residency. Teachers also used some of the projects from the Ideas Fund which were specifically designed for at-home learning. For children without digital access, we recruited artist Kate Temple to design quality art packs and inspiration guides and worked with the schools and local partner North Edinburgh Arts to ensure the packs reached the children at home.

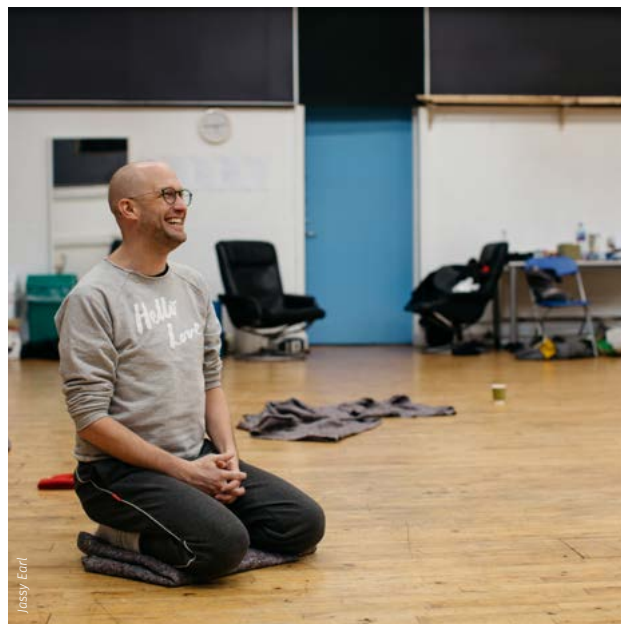
Discussions with the schools are ongoing to ensure the project can be delivered despite restrictions expected in schools over the next year.

Teachers Theatre Club

The Teachers Theatre Club moved online, with members watching the plethora of digital performances made available over the lockdown and then discussing their experience in online conversations with Imagine staff and each other. The online move also enabled us to widen our reach by opening up the event to teachers all over Scotland.

PUSH+

Our Creative Europe funded co-operation project PUSH+ was in its second year when the crisis hit with restrictions on social distancing and travel making activities for the year ahead impossible. As a result, all planned activities have been rescheduled to 2021/22. In the meantime, we will offer a year-long programme of online initiatives to keep the project partners and artists connected with time for further research into the three topics of Home, Failure and Different Bodies. This began in May with a two-week online mentoring workshop for PUSH+ artists facilitated by experienced artist Luke Pell. This mentoring offered time and space to reflect while connecting the artists from different Labs with each other. We have commissioned a series of PUSH+ artist blogs and will continue to do this in the year ahead.



Artist and facilitator Luke Pell

Digital Delegate Encounters

In order to mark the cancelled Festival, Imagine organised a series of free online encounters to bring the children's theatre and dance sector together. As well as providing rich content to our loyal audiences, Digital Delegate Encounters gave us the opportunity to trial online events and get feedback from delegates on their experience. 557 industry professionals from 34 countries joined the two-day digital event which included discussions with artists, panel talks, networking events and even an online disco! The Digital Encounters created a friendly space to share anecdotes and observations amongst global peers and was very well received by delegates. They also enabled us to reach more widely within the sector and we are now considering including an online delegate programme to future festivals.


557
delegates


34
countries

"I really appreciate Imagine offering this delegate program for free, online. It helps break down barriers to those not tied to organizations that can support their attendance. The opportunities for accessibility and inclusion across the sector are HUGELY valuable!"

"Considering you pulled this together in record time, the thinking that you put into it and the care you took over curating the programme to make it fresh and relevant was just brilliant."

Long term:

Planning for the 2021 Festival

While our initial plans on cancelling the 2020 Festival was to re-stage it in 2021, it is now becoming clear that we need to start planning for a different kind of Festival in 2021, in light of all the uncertainty over social distancing.

We are currently exploring a number of options to enable us to continue serving our three main audience groups: schools, industry professionals (delegates) and families. Given the expected travel restrictions, the Festivals' programme is likely to focus on Scottish and UK productions, with most of the delegate programme being provided online. At this stage, we expect many of the performances may have to be presented in school buildings as well as in outdoor spaces. Our family programme may need to be reduced depending on the re-opening schedules of venues. Events may have smaller capacity, be presented in informal settings or even online.

The 2021 Festival will not be what we thought it would be a year ago. But we see the new practical challenges as opportunities for experimentation: trying new ways to connect with our audiences, while maintaining our reputation of presenting the world's best performances for children.

Planning for Theatre in Schools Scotland

Following the cancellation of two TiSS tours in Spring and the current plans for social distancing in schools in the 2020–21 academic year, we have been working with the performing companies, schools and local authorities IT specialists to defy these challenges and maximise the opportunities of blended learning. Keeping the essence of live performance at the heart of our plans, we are currently exploring a model whereby pupils watch some parts of a performance through live stream, interact with the director or performer afterwards, and experience some elements of the performance, in the classroom or at home, through the use of props or additional resources and activities.



Long term priorities

While recovering from the Covid crisis is forefront in our minds, we will continue to focus on two areas which were identified as priorities for the coming years, and ensure they are integral to any planning.

★ Diversity in programming, artists and audiences

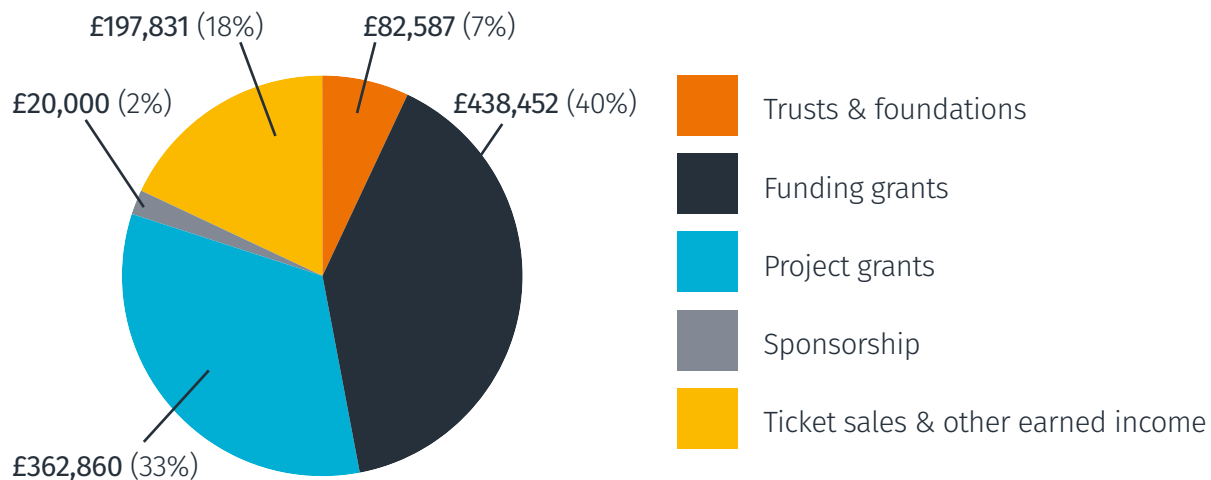
We want to challenge inequality. We will strive to be open to all and will proactively seek out a range of audiences and artists to ensure we are representative of our diverse society.

★ Addressing the climate crisis

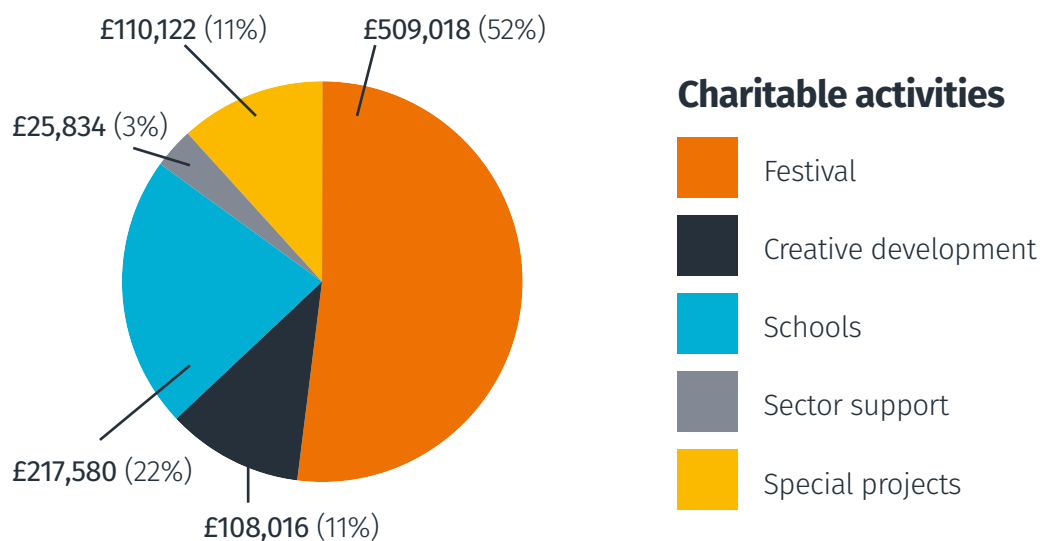
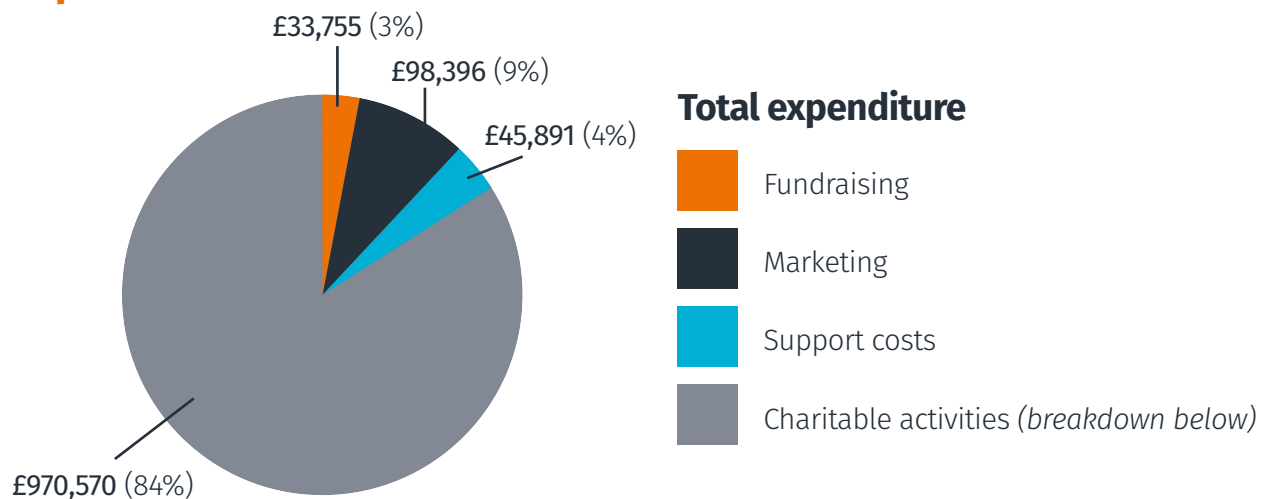
We recognise there is a climate emergency and will be taking action to adapt what we do in response, particularly in areas such as international travel where we can make the biggest change.

Financial review

Income



Expenditure



Our supporters

Imagine's work is supported by a range of national and international organisations, trusts and foundations, businesses and individuals. Their generosity and flexibility, especially during the onset of Covid-19, meant that we could continue to inspire children, families, schools and artists. We would like to thank them all for their invaluable support.

Major Funders



Scottish Government
Riaghaltas na h-Alba
gov.scot



Co-funded by the
Creative Europe Programme
of the European Union

PLACE
Programme

Supporters

Baillie Gifford
The Robertson Trust
EIS
The Bank of Scotland Foundation
The Hugh Fraser Foundation
The Garrick Charitable Trust
Walter Scott and Partners Ltd Giving Group
The Mackintosh Foundation
John Watson's Trust
The D'Oyly Carte Charitable Trust
The Tulip Trust
The Cruden Foundation
The Nancie Massey Charitable Trust
The Norwegian Honorary Consulate General, Edinburgh
The Consulate General of Ireland in Edinburgh
The Government of Flanders Department of Culture, Youth and Media
The General Representation of Flanders in the UK
Performing Arts Fund NL
Québec Government Office, London
Jerwood Arts
The Backstage Trust
The Artemis Charitable Foundation
The Idlewild Trust

Our staff

Imagine is led by a small enthusiastic team who brings the breadth of professional skill and experience necessary to manage a high-profile organisation with a reputation for excellence. The team is supported by a board of directors whose members come from a range of backgrounds.

In addition, in the lead-up to and during the Festival, the team is joined by temporary staff as well as many volunteers who all contribute to its success.

Artists we have supported in 2019/20

Max Alexander, Pilrig Park Residency
Mele Broomes, Artist in Residence
Lou Brodie, Imagine at Work Room
Zoe Bullock, Launchpad
Heather Cassidy, Explore
Julie Cleaves, Imagine at Work Room
Jordy Deelight, Imagine at BOP
Ellie Dubois, PUSH+
Jassy Earl, PUSH+
Oliver Emanuel, Accelerator
Ashanti Harris, Artist in Residence
Brian Hartley, Immerse Artist in Residence
Geraldine Heaney, Immerse Artist in Residence
Lucy Ireland, Accelerator
Morwenna Kearsley, Immerse Artist in Residence
Rhea Lewis, Artist in Residence
Skye Loneragan, Accelerator
Jim Manganello, Accelerator / Imagine at Lyra / Immerse Artist in Residence
Xana Marwick, Accelerator
Alex McCabe, Launchpad
Eoin McKenzie, Immerse Artist in Residence / PUSH+
Caitlin Mulgrew, Immerse Artist in Residence
Anna Noonan, Immerse Artist in Residence / PUSH+
Emma Jayne Park, PUSH+
Robert Softley Gale, Pilrig Park Residency
Gudrun Soley Sigurdardottir, Immerse Artist in Residence
Robbie Synge, Imagine at Work Room
Kate Temple, Immerse Artist in Residence
Niroshini Thambar, Immerse Artist in Residence
Hannah Venet, Immerse Artist in Residence
Vince Virr, PUSH+
Katy Wilson, Immerse Artist in Residence
Lisa Wilson, Explore

Festival

The World's Best
Theatre and Dance
for Young Audiences





30B Grindlay Street, Edinburgh, EH3 9AX

Tel: 0131 225 8050

Email: info@imagine.org.uk

www.imagine.org.uk

Imagine is a company limited by guarantee. Company No. SC115855. Charity No. SC016437. VAT Registration No. 553 3970 29