

**Schools
programme**

Edinburgh International
**Children's
Festival**
24 May – 1 June 2025



www.imagine.org.uk

WELCOME!



Over the last 35 years, we have been delighted to inspire many generations of children at our one-week festival. Like you, we believe in the incredible transformative power that accessing live performance can have in the lives of young people, and we thank you for making this possible.

In 2025 we feature 12 productions from 7 countries with a Spotlight on Flanders, a small region with a mighty output and a big reputation for quality and risk taking in theatre for young audiences. We are also proud to present two new Scottish commissions from both new and established artists.

The programme will unravel hidden visual delights through shadow play and puppetry, celebrate our natural environment and take us on cultural adventures full of delightful music and language. Woven throughout many of the performances is the simple joy of play – not only from the perspective of children, but also of adults, in a madcap exploration of what it means to be a grown up.

Come and join us on this journey with your pupils!

A stylized signature of Noel Jordan.

Noel Jordan
Festival Director

PROGRAMME AT A GLANCE



TIÉBÉLÉ



BENEATH THE SNOW



GAME WITHIN A GAME



**WHEN THE
WORLD TURNS**



SHADES OF SHADOWS



NOT FALLING



GROWN UPS



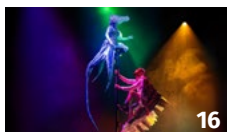
TONGUE TWISTER



DOUBLE YOU



**THE SHOW FOR
YOUNG MEN**



**THE UNLIKELY
FRIENDSHIP**



THE PALE BARON

6 REASONS TO TAKE YOUR PUPILS TO THE FESTIVAL

1 Relevance for the curriculum

- ★ Provides rich, interdisciplinary learning experiences exploring storytelling, emotions and creativity (Expressive Arts)
- ★ Develops critical thinking, listening and communication skills (Literacy)
- ★ Increases empathy and social skills by connecting with characters and narratives (Health and Wellbeing)

2 Equal opportunities

- ★ Reduces cultural and economic barriers and ensures access for those who might not otherwise attend
- ★ Creates shared cultural references among pupils
- ★ Helps young people feel part of wider cultural community

3 Cultural enrichment

- ★ Exposes pupils to high quality live performances
- ★ Broadens cultural horizons and understanding of the world
- ★ Provides joyful and profound experiences

4 Skills development

- ★ Helps develop meta-skills including curiosity, creativity, focus and communication
- ★ Develops critical thinking through discussion of performances
- ★ Encourages listening, dialogue and reflection

5 Social and emotional development

- ★ Helps support collaborative working amongst pupils
- ★ Improves communication skills and emotional intelligence
- ★ Increases self-esteem and confidence

6 Inspiration and aspiration

- ★ Raises children's aspirations and hopes for their future
- ★ Sparks creativity and imagination
- ★ Provides memorable learning experiences outside the classroom

“Every child has the right to relax, play and take part in a wide range of cultural and artistic activities.”

Article 31 of the UN Convention on the Rights of the Child

WHAT WE OFFER

★ **Low ticket prices – £6 per pupil (same since 2015)**

★ **Up to 100% travel subsidy**

★ **Links to the curriculum with detailed E&Os**

★ **Q&A sessions after performances**

★ **Learning resources including an interactive digital tool**

★ **Help with children/adult ratios if needed (chaperone)**

Free ticket allowance and travel subsidy

	Nos of children	Free adult	Travel subsidy
State schools	for 10 pupils	1 free adult	70% refund of coach hire
State nurseries	for 5 pupils	1 free adult	100% refund of public transport
Special schools	for 3 pupils	1 free adult	100% refund of travel cost

As part of our Environmental Policy, we strongly encourage local schools to walk to venues whenever possible.

Accessibility

Imagine has a strong commitment to accessibility and equality, and we will try and accommodate all access requirements.

- There are coach drop-off points near all venues.
- All venues are wheelchair accessible but each have limited numbers of wheelchair spaces.
- Some of our venues will have a dedicated relaxed quiet space.
- Children with additional support needs can attend any of our performances but some shows are more suitable than others for those with complex needs.

- Let us know if you have pupils with access needs (including visual or hearing impairments) so we can accommodate them.
- A Festival volunteer will meet and assist all groups on arrival.
- Relaxed performance: *Tongue Twister* on Fri 30 May 10:45
- BSL performance of *The Unlikely Friendship* on Tue 27 May at 19:00

Please contact us for advice on the above and let us know about any access needs on your booking form.

HOW TO BOOK

1 Select the shows

Select the shows you would like to attend. Please also provide alternatives as some shows have limited capacity.

2 Date and times

Let us know which dates/times you *cannot* make so we can try and accommodate your group(s).

3 Complete a booking form

Either book online or download a booking form on our website:

www.imagine.org.uk/festival/schools

If booking multiple groups, you can also use **[this spreadsheet](#)**.

4 Send your booking form

- Complete your booking form online at **www.imagine.org.uk/festival/schools**
- Email your booking to **schools@imagine.org.uk**
- Post your booking to
**Schools Booking, Imagine, 30B
Grindlay Street, Edinburgh EH3 9AX**

Make sure you send your booking form by **22 January** to be considered in our first round of ticket allocations. Bookings received afterwards will need to fit around the ones already confirmed. If we can't accommodate your booking, we will contact you to look at alternatives.

For further help or to check availability, please contact our Schools Booking Coordinator on **0131 225 8050** or email **schools@imagine.org.uk**





TIÉBÉLÉ

LEVEL
Nursery-P2
(2 yrs+)

**THÉÂTRE DE LA GUIMBARDE with
THE WÉLÉNI ASSOCIATION**
BELGIUM/BURKINA FASO

Duration: 30 min + 10 min stay and play
Seating: Cushions and benches
School Capacity: 44/show

Venue: Lyceum Studio

Tue 27 May 13:45, 16:30

Wed 28 May 11:00, 13:45

Thu 29 May 11:00, 13:45

Curriculum for Excellence:

*Expressive Arts/Social Studies/
Health & Wellbeing*

This sensory show provides an engaging platform for inquiry-based and experiential learning, where children can explore art, sound, and natural materials while fostering empathy for other cultures. It supports creativity, respect for diversity, and interdisciplinary connections.

On the roof of a Kassena house, a young woman mixes clay and water and starts making marks. Accompanying her is a musician playing the N'goni string instrument. The melodic sound and their voices blend and interweave. Together, they sketch the patterns that will brighten the walls of their houses.

Tiébélé echoes the magnificent prints left on their homes by the women of a village in Burkina Faso. It combines earth and song, organic matter and poetry. A creation that links the gestures of these African women to toddlers' first drawings.

For many years, Théâtre de la Guimbarde has built bridges between Europe and West Africa through its artistic approach of encouraging different perspectives and authentic sharings. Born from this desire to celebrate respectful international exchanges, *Tiébélé* offers a delightful experience that resonates with both toddlers and their adults.

BENEATH THE SNOW

LEVEL
Nursery–P2
(3 yrs+)

LES BESTIOLES

FRANCE

Duration: 35 min + 10 min of play time

Seating: Cushions and chairs

School Capacity: 72/show

Venue: Traverse 2

Thu 29 May 11:15, 13:30

Fri 30 May 11:00

Curriculum for Excellence:

Expressive Arts/Literacy/Sciences

By bringing paper to life, this performance ties into Expressive Arts, allowing young audiences to explore themes of metamorphosis and storytelling in new ways. Being close to the magic, pupils will leave inspired, engaged, and ready to explore their own creative potential.

In this immersive show, two figures dressed in white, walk on a white carpet made of tissue paper. You can hear the sound of the wind and snow crunching under their feet. They playfully awaken what lay dormant, opening the doors to the imagination. Suddenly a pile of papers flutters... birds fly away, the paper leaves transform into a sea raging, moons dancing, a fish spreading its wings, perhaps a dragon...

Without words, but accompanied in their movements by an enveloping sound composition, the two performers play with the paper and the wonder of metamorphosis. Sitting in close proximity the young audience discovers this poetic and sensory universe which sparks their imagination... and it is with delight that they dive at the end into this white and airy evolving material.





GAME WITHIN A GAME

LEVEL
Nursery-P3
(3 yrs+)

CEREN ORAN and MOVING BORDERS
GERMANY

Duration: 40 min

Seating: Theatre seating

School Capacity: 68/show

Venue: Assembly Roxy

Thu 29 May 10:30, 13:30

Fri 30 May 10:30, 16:00

Curriculum for Excellence:

Expressive Arts/Health & Wellbeing/RME

This show encourages young minds to think creatively, explore decision-making, and consider group dynamics as they watch the performers navigate different rules and choices. With humour and heart, this experience opens discussions around problem-solving, cooperation and resilience.

When we play, anything is possible: the floor is made of lava, objects fly through the air and everyday items take on a whole new meaning. The stool is a raft, a bridge, a tower. It stands on its head, lies on its side, stands on its feet... From an almost infinite selection of possibilities, new worlds emerge, expand and are discarded.

But how does one game lead to another? Who decides what happens next? Who makes the rules and how to make the best decision? And what happens if someone doesn't want to take part?

Three dancers get involved in this humorous and touching 'game within a game', exploring different rules, spaces and choices.

"The show is worthy of a gala and is an absolutely brilliant piece suitable for all ages."

Dance For You Magazine

WHEN THE WORLD TURNS

LEVEL
PMLD
(P1-S6)

OILY CART and POLYGLOT
ENGLAND/AUSTRALIA

Duration: 60 min

Seating: Chairs for carers

School Capacity: 6 children and their carers

Venue: Lyra

Mon 26 May 10:30, 13:30

Tue 27 May 10:30, 13:30

Wed 28 May 10:30, 13:30

Thu 29 May 10:30, 13:30

Curriculum for Excellence:

*Experiential Learning (Health & Wellbeing)/
Expressive Arts/Literacy & Communication*

This immersive and nurturing environment emphasises stillness and presence, where children can create their own magical world led by their senses. With a focus on accessibility, this intimate performance is expertly crafted for ASN pupils, ensuring everyone can participate and thrive.

Join us in a living, breathing, sensory adventure.

The world has decided things need to change. It's shaken and shuffled, tumbled and turned, and now something magical and mischievous has started to grow...

Immersed amongst hundreds of real plants, watch, hear and feel as music, puppets, sounds, scents and shadows come to life around you. Here we can be still, here we can just be. Together, we'll create a new world, led by our senses.

When the World Turns is an accessible, intimate, interactive show from the pioneers of sensory theatre, Oily Cart. You can expect lots of up-close sensory moments, a gentle pace, and plenty of breathing space for processing. The show has been expertly crafted for disabled children of all ages who experience the most barriers to access.

**"Profoundly moving... reveals
new possibilities"**
The Conversation

Roswitha Chesher

LEVEL
P1–P6



SHADES OF SHADOWS

TANGRAM KOLLEKTIV
GERMANY/FRANCE

Duration: 45 min including Q&A

Seating: Cushions and benches

School Capacity: 99/show

Venue: The Studio @ Capital Theatres

Mon 26 May 10:00, 13:15

Tue 27 May 10:00, 13:15

Wed 28 May 09:30, 11:15

Curriculum for Excellence:

*Expressive Arts/Science/Literacy/
Social Studies*

This performance invites children to explore the relationship between objects and their shadows, enhancing their understanding of physics and visual arts. Everyday items come to life in a magical interplay of movement and illusion. A great opportunity to inspire creativity and curiosity in your classroom.

Light and shadow belong together. But what happens when shadows suddenly develop a life of their own, when they multiply at will, liberated from the laws of physics, to come into the limelight?

This delightful show is a journey through an enchanted city, with two puppeteers creating and leading us into the magical universe of shadows, where everyday objects perform their own little dance of freedom. Shadows enter through the back door to steal our things. They get bigger and smaller, they split and merge. They start interacting with the world and the relation between objects and their shadows becomes blurry.

It almost seems as if the door to another world has been opened...

“This astonishing family show tells a playful, exhilarating and loving story, conjuring childhood memories, as shadows come to life.”

Fringe reviews

NOT FALLING

TOUT PETIT
BELGIUM

Duration: 30 min + 20 min of play time

Seating: Theatre seating

School Capacity: 58/show

Venue: Dance Base

Tue 27 May 10:15, 12:45

Wed 28 May 10:15, 12:45

Thu 29 May 10:15, 12:45

Fri 30 May 10:15, 14:00

Curriculum for Excellence:

Expressive Arts/Science/Health & Wellbeing

An energetic show that captivates with its choreography and film projections of children leaping and floating, demonstrating the wonders of gravity. It will encourage inquiry and imagination, enabling your class to witness how art and science can intertwine, sparking curiosity and inspiring future learning.

Not Falling is an energetic performance in which three dancers try to escape gravity. They fly through space, soar in the air and gently return to the ground. In a fascinating interaction with film projections of children leaping and seemingly floating in slow motion, the compelling performers create a world in which everything seems possible.

From the creators of sell-out 2022 Festival show *Light!*, comes this mesmerising multi-media show where the sky's the limit.

“A simple but stimulating exploration of sound and movement.”

De Standaard



Kurt Van der Elst



LEVEL
P1-P7

GROWN UPS

COMPAGNIE BARBARIE and BRONKS
BELGIUM

Duration: 55 min including Q&A

Seating: Theatre seating

School Capacity: 180/show

Venue: Traverse 1

Mon 26 May 09:45, 13:00

Tue 27 May 13:00, 19:15

Wed 28 May 09:45

Curriculum for Excellence:

*Expressive Arts (Drama and Dance)/
Health & Wellbeing/Social Studies*

As the performance blurs the lines between work and play, students will connect to the curriculum by engaging with themes of responsibility, creativity, and perspective. They'll ponder what their adults are up to when they think no one is watching and reflect on their own experiences while sparking discussions about the world around them.

Adults work. And children play. Or they go to school. Or they sleep. And when they sleep, grown-ups continue working. In the living room. On their computers. Once they've cleaned the kitchen.

But what do grown-ups really do? Do they put the world to rights? Do they have a nap? Or do they make a mess of things? Do they really have everything under control?

A hilarious and absurd tragi-comedy about what happens to grown-ups when children are not looking.

"The weird behavior of adults is top entertainment for children."

Theaterkrant

TONGUE TWISTER

LEVEL
P2–P7

GREG SINCLAIR and SCOTTISH THEATRE PRODUCERS

SCOTLAND

Duration: 60 min including Q&A

Seating: Theatre seating

School Capacity: 76/show

Venue: North Edinburgh Arts

Tue 27 May 10:45, 13:45

Wed 28 May 13:45, 18:30^A

Thu 29 May 10:45, 13:45

Fri 30 May 10:45^R



^A Audio
description

^R Relaxed
performance

Curriculum for Excellence:

*Literacy (Listening & Talking)/Expressive
Arts (Drama and Music)/Social Studies
(Understanding the world)*

This performance showcases the beauty of languages and a dazzling display of costumes, fostering creativity, communication, and cultural awareness. The show's humour and rhythm will engage children, sparking their interest in language. It also offers an inclusive celebration of diversity that every child can enjoy.

Tongue Twister is one man's attempt to say tongue twisters in as many different languages as possible. Whilst also trying to dance. And make music. And do all the costume changes without leaving the stage.

A delight for the eyes and ears, created and performed by award-winning performance artist and musician Greg Sinclair, and featuring dazzling costumes and innovative visual design.

Humorous, colourful, rhythmical and odd, *Tongue Twister* is a celebration of the musical beauty of language.

Commissioned by Imagine, in partnership with Aberdeen Performing Arts, in association with Showbox Festival and Kloden and supported by North Edinburgh Arts. Funded through the Scottish Government's Festivals Expo Fund, development funded by Creative Scotland.





DOUBLE YOU

LEVEL
P2-S1

BE FLAT
BELGIUM

Duration: 70 min including Q&A

Seating: Benches

School Capacity: 140/show

Venue: Portobello Town Hall

Fri 30 May 10:30, 19:00

Curriculum for Excellence:

*Expressive Arts (Drama)/Social Studies/
Literacy/Physical Education*

This show invites children to explore concepts of boundaries and identity while engaging with themes of social awareness and emotional literacy. As they experience the simultaneous performances, they will observe and interpret different perspectives, encouraging critical thinking and discussion.

Double You is a circus performance based on the Fear of Missing Out. Five talented artists share two stages, separated by a fabric wall with the audience on either side. Shadows and sounds reach over the curtain. Why are they laughing over there? Are you missing something?

Double You is a social experiment around boundaries and identity that combines circus with acro-dance, parkour, Chinese pole and hand balancing. The two simultaneous performances, mutually exclusive yet interwoven, create one universal experience, with every spectator perceiving this exciting circus show in a different way.

Are you ready to overcome your FOMO?!

THE SHOW FOR YOUNG MEN

LEVEL
P4–S2

GUESTHOUSE PROJECTS

SCOTLAND

Duration: 60 min including Q&A

Seating: Theatre seating

School Capacity: 128/show

Venue: The Studio @ Capital Theatres

Thu 29 May 13:30, 18:00

Fri 30 May 10:30

Curriculum for Excellence:

Health & Wellbeing/Expressive Arts/Social Studies/Literacy (Listening and Talking)

Through laughter, risk-taking, and mischief, the performers construct a space where compassion and understanding can thrive. This performance promises to start important conversations in the classroom about empathy, emotional expression, and what it means to be a caring friend.

A man and a boy meet on an extraordinary building site, at dawn. Together they dance and play, trying to make sense of it all. Using playground games, joyful dance, risk-taking and mischief, Robbie (45) and Alfie (11) construct and deconstruct their environment and their relationship to each other, forging a space where a more compassionate and caring mode of masculinity can exist.

Directed by Eoin McKenzie in collaboration with Robbie Synge and young performer Alfie, *The Show for Young Men* is a funny and tender new dance performance that explores familiar and unexpected ideas about masculinity, connections and friendship.

“A work of quiet intelligence and enormous tenderness.”

The Stage



Andrew Perry

To book: www.imagine.org.uk | schools@imagine.org.uk | 0131 225 8050



THE UNLIKELY FRIENDSHIP OF FEATHER BOY AND TENTACLE GIRL

LEVEL
P5-S1

VEE SMITH and SADIQ ALI
SCOTLAND

Duration: 65 min including Q&A

Seating: Theatre seating

School Capacity: 111/show

Venue: Assembly Roxy

Mon 26 May 13:15

Tue 27 May 13:15, 19:00^B

Wed 28 May 10:00, 13:15



^B BSL

performance

Curriculum for Excellence:

*Expressive Arts/Health & Wellbeing/
Literacy*

Celebrating themes of friendship, weirdness and the joy of living authentically, this show will encourage students to embrace their individuality. Through costuming and captivating storytelling, children will not only be entertained but also inspired to explore concepts of identity and self-expression.

Two friends perform breathtaking aerial shows. They fly, spin, hang from the rooftops and fall out of the sky...

But they weren't always so glorious. How did they transform from feeling like outsiders, unable to fit in, to the fantastical creatures they always knew they had inside them?

The Unlikely Friendship of Feather Boy and Tentacle Girl is the touching story of a girl who wants to be a monster and a boy who wants to fly. Exploring the universal yearning to belong and sharing the joy of friendship, this is a dynamic and visually stunning aerial show.

Commissioned by Imagine, produced by Catherine Wheels in association with the National Theatre of Scotland, supported by Assembly. Funded through the Scottish Government's Festivals Expo Fund, development funded by Creative Scotland.

THE PALE BARON

KOPERGIETERY

BELGIUM

Duration: 75 min including Q&A

Seating: Theatre seating

School Capacity: 180/show

Venue: Traverse 1

Thu 29 May 10:00, 13:00

Fri 30 May 10:00, 19:30

Curriculum for Excellence:

*Expressive Arts/Literacy/Social Studies
(People, Place, Environment)*

The show creates a world dominated by a leader who fears the power of expression and creativity. Students will engage with vital social themes, including tolerance and the celebration of individuality. This can spark discussions on the importance of artistic expression and nurture critical thinking and emotional literacy.

The pale baron is the great leader of the underwater state. He always grabs the last piece, even before others have been served. He strongly dislikes poets. They mean all kinds of things, in between the lines, in the blank spaces where nothing is written. This makes the baron feel very uncomfortable.

Fortunately, Felix & Felka are not poets. They are singers...

The Pale Baron is a musical fable about an intimate friendship between two musicians during a regime that hunts down everything or anyone that is deemed superfluous or different.

“The Pale Baron is a musical fairy tale that could just as easily be about a dictatorship from the past as one from the future, and which adults and children will each understand in different ways.”

Het Nieuwsblad



Phile Deprez

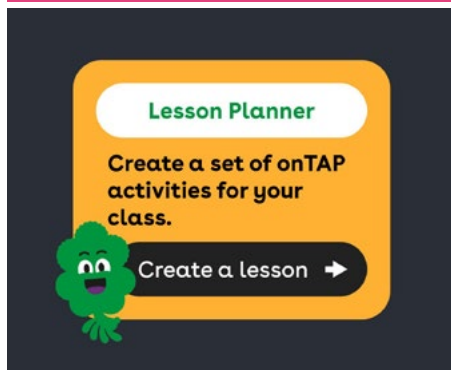
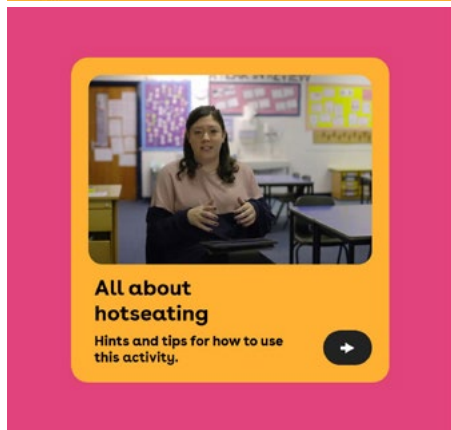
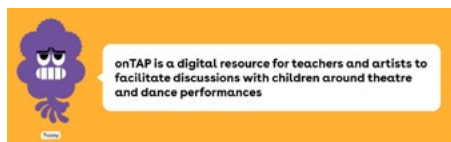
MAKING THE MOST OF YOUR VISIT

A visit to the Festival is a very special occasion for school pupils. Make it even more meaningful and enriching!

onTAP is a free and easy to use resource designed by teachers which you can use in the classroom. We've outlined some of the activities on this page:

www.imagine.org.uk/ontap

Screenshots of onTAP



Before the show

Pre-show preparation is a key part of the journey. Pupils who know what to expect, arrive at the theatre feeling excited and confident and are more likely to stay focused and make meaningful connections between the show and their broader learning.

- **Imagining the show:** Using just the title and image, discuss what the show might be like. What could happen? How might it start and end?
- **Themes:** Talk to your class about the themes of the show. Talk about the feelings these might bring and the relevance in their life.
- **Design a poster:** Design a poster to promote the show. What key elements should be included? Then look at all the pupils' posters. Were there common themes? If so, why are they important?

“I was pleasantly surprised at how easy it was to use and customise onTAP. The children really engaged with the activities, especially designing a poster beforehand, and then looking back on it after the show and seeing what they would change.”

Teacher, 2024 Festival

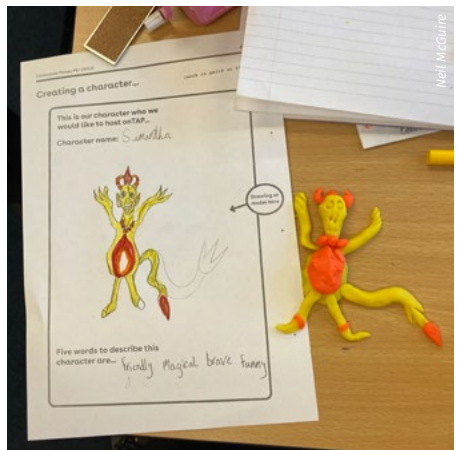
During

- Don't worry if your pupils are not quiet at all times. Let them exclaim, laugh and speak quietly about the show during the performance.
- Enjoy our 10 minutes Question & Answer session with the creative team which happens straight after the show for all performances aimed at primary/secondary pupils. Children can ask questions and gain first-hand insight into artists' creative process.

After the show

Post show discussions and activities give space for pupils to process what they've experienced in the theatre. They help children develop reflection skills, articulate their opinions and enhance their confidence. They also extend the impact of the visit beyond just 'a nice day out' and help you link-up to any relevant curriculum work.

- **Hot seat:** Set up a hot seat and ask a pupil to imagine they are one of the characters from the show. Ask who they are, what they did and why, whether they would change anything etc.
- **Voting:** Get pupils to vote on criteria such as performers, production value, narrative etc.
- **Memory box:** Make a memory box by asking pupils to write everything they remember about the show.





BEYOND THE FESTIVAL

Theatre In Schools Scotland

Theatre in Schools Scotland brings bold, inspiring, live performances into Scotland's schools and nurseries.

The year-round programme, informed by teachers, features Scottish performing companies specialising in theatre and dance for young people. Productions are designed specifically with schools in mind, taking place in the assembly/gym hall or in classrooms, and are available to book anywhere in Scotland.

Learning resources are available for each show. We can work with you to plan your visit and answer any questions. If you are interested in making a booking for your school or would like more information about how we can work together, please contact TISS@imagine.org.uk.

www.TheatreInSchoolsScotland.co.uk

Theatre in Schools Scotland is a partnership between Imagine and National Theatre of Scotland.

Imagine Teachers Club

Our Teachers Club aims to encourage teachers to see more live performances, develop critical thinking skills, become more confident in discussing performance and in turn, inspire pupils to do the same.

Imagine Teachers Club is now open to new participants who will have the opportunity to attend highly subsidised performances at the Children's Festival (without pupils), at Edinburgh's other festivals and year-round at a range of venues. They will also take part in post-show discussions and meet theatre and dance professionals including artists, designers, programmers, critics and production staff.

To take part or for more information, contact Anna Broomfield:
anna@imagine.org.uk

FESTIVAL PROGRAMME COMPANY CREDITS

Tiébéle: Co-produced by the European project Mapping. In collaboration with the Wéléni Association in Burkina Faso. Supported by Fédération Wallonie-Bruxelles.

Beneath the Snow: Co-produced by Cultural Centre Pablo Picasso – Scene for young audience – Homécourt (East of France). Supported by Regional Council of Lorraine, Departemental Council of Moselle, City of Metz, Spéidam.

Game within a Game: Co-production of Ceren Oran & Moving Borders with COMEDIA Theatre Cologne and HochX Theatre and Live Art Munich. Supported by the Cultural Department of the City of Munich and the Bavarian State Association for Contemporary Dance (BLZT) with funds from the Bavarian State Ministry for Science and the Arts; and by the NATIONALES PERFORMANCE NETZ International Guest Performance Fund for Dance (funded by the Federal Government Commissioner for Culture and the Media).

When the World Turns: Originally commissioned by Arts Centre Melbourne for major arts and disability festival Alter State 2022. The UK version has received support from Arts Council England, The National Lottery Community Fund, Paul Hamlyn Foundation and Wandsworth Council.

Shades of Shadows: A co-production with the Figurentheater Osnabrück. Supported by the Landesverband Freie Tanz und Theaterschaffende Baden-Württemberg e. V. with funds from the Ministry of Science, Research and the Arts of the State of Baden-WA/rttemberg. Thanks to Ariel Doron, FITZ Stuttgart, technical team of RAMPE Stuttgart.

Not Falling: Co-production HET LAB, Perpodium, C-mine and STUK House for Dance, Image and Sound. With the support of the city of Hasselt and Leuven, the Flemish Community and the Tax Shelter system of the Belgian Federal Government. With special thanks to Arktos, Kinderwerking Fabota, C-TAKT, Cirkus in Beweging and deRUIMTE.

Grown Ups: Produced by BRONKS/compagnie barbarie and co-produced by Perpodium. With the support of Tax Shelter van de Belgische Federale Overheid via BNPPFF and with thanks to De Studio, FroeFroe.

Tongue Twister: Commissioned by Imagine in partnership with Aberdeen Performing Arts, in association with Showbox Festival and Kloden and supported by North Edinburgh Arts. Development funded by Creative Scotland.

Double You: Coproduced by PERPLX, Espace Catastrophe Creation residencies and support: Circuscenrum, Centre des Arts scéniques, Dommelhof, Latitude 50, Mira Miro, MCath, 30CC, Palestinian Circus School, PERPLX, CC De Grote Post, GC De Kroon With the support of the Flemish Community and the City of Ghent.

The Show for Young Men: Presented by GuestHouse Projects in association with Imagine, supported by North Edinburgh Arts and the National Lottery through Creative Scotland. Developed with support from Imagine's Accelerator programme, Creative Europe's PUSH+ Programme and residencies with The Ark, Dublin; Aaben Dans, Roskilde.

The Unlikely Friendship of Feather Boy and Tentacle Girl: Commissioned by Imagine, produced by Catherine Wheels, created in association with NTS and supported by Assembly. Development funded by Creative Scotland.

The Pale Baron: Supported by the Flemish Government, the city of Ghent and the Tax Shelter measure of the Belgian Federal Government.

Our *Spotlight on Flanders* is supported by Flanders Department of Culture, Youth and Media. Our Accessibility Programme is supported by The Cruden Foundation and Stevenston Charitable Trust.

Imagine's *Creative Encounters* project is supported by Baillie Gifford and Young Start.

VENUE INFORMATION

Assembly Roxy

2 Roxburgh Pl, Edinburgh EH8 9SU
www.assemblyroxy.com

Dance Base

14–16 Grassmarket, Edinburgh, EH1 2JU
www.dancebase.co.uk

Lyra

11 Harewood Rd, Edinburgh EH16 4NT
www.lyra.co.uk

North Edinburgh Arts

15a Pennywell Court, Edinburgh, EH4 4TZ
www.northedinburgharts.co.uk

The Studio @ Capital Theatres

22 Potterrow, Edinburgh EH8 9BL
www.capitaltheatres.com

Traverse Theatre

10 Cambridge Street, Edinburgh EH1 2ED
www.traverse.co.uk

Portobello Town Hall

147–149 Portobello High St,
Portobello EH15 1AF
www.portbellotownhall.org

Lyceum Studio

30B Grindlay Street, Edinburgh EH3 9AX
lyceum.org.uk

SCHOOLS FESTIVAL DIARY

Mon 26 May	Level	Starts	Ends	Venue
Grown Ups *	P1-P7	09:45	10:40	Traverse 1
Shades of Shadows *	P1-P6	10:00	10:45	The Studio @ Capital Theatres
When the World Turns	P1-S6	10:30	11:30	Lyra
Grown Ups *	P1-P7	13:00	13:55	Traverse 1
Shades of Shadows *	P1-P6	13:15	14:00	The Studio @ Capital Theatres
The Unlikely Friendship *	P5-S1	13:15	14:20	Assembly Roxy
When the World Turns	P1-S6	13:30	14:30	Lyra

Tue 27 May	Level	Starts	Ends	Venue
Shades of Shadows *	P1-P6	10:00	10:45	The Studio @ Capital Theatres
Not Falling	P1-P6	10:15	11:05	Dance Base
When the World Turns	P1-S6	10:30	11:30	Lyra
Tongue Twister *	P2-P7	10:45	11:45	North Edinburgh Arts
Not Falling	P1-P6	12:45	13:35	Dance Base
Grown Ups *	P1-P7	13:00	13:55	Traverse 1
Shades of Shadows *	P1-P6	13:15	14:00	The Studio @ Capital Theatres
The Unlikely Friendship *	P5-S1	13:15	14:20	Assembly Roxy
When the World Turns	P1-S6	13:30	14:30	Lyra
Tongue Twister *	P2-P7	13:45	14:45	North Edinburgh Arts
Tiébélé	Nursery-P2	13:45	14:25	Lyceum Studio
Tiébélé	Nursery-P2	16:30	17:10	Lyceum Studio
The Unlikely Friendship *	P5-S1	19:00	19:55	Assembly Roxy
Grown Ups	P1-P7	19:15	20:10	Traverse 1

Wed 28 May	Level	Starts	Ends	Venue
Shades of Shadows *	P1-P6	09:30	10:15	The Studio @ Capital Theatres
Grown Ups *	P1-P7	09:45	10:40	Traverse 1
The Unlikely Friendship *	P5-S1	10:00	11:05	Assembly Roxy
Not Falling	P1-P6	10:15	11:05	Dance Base
When the World Turns	P1-S6	10:30	11:30	Lyra
Tiébélé	Nursery-P2	11:00	11:40	Lyceum Studio
Shades of Shadows *	P1-P6	11:15	12:00	The Studio @ Capital Theatres
Not Falling	P1-P6	12:45	13:35	Dance Base
The Unlikely Friendship *	P5-S1	13:15	14:20	Assembly Roxy
When the World Turns	P1-S6	13:30	14:30	Lyra
Tongue Twister **	P2-P7	13:45	14:45	North Edinburgh Arts
Tiébélé	Nursery-P2	13:45	14:25	Lyceum Studio
Tongue Twister	P2-P7	18:30	19:20	North Edinburgh Arts

* Includes Q&A session * BSL performance * Relaxed performance * Audio description

Thu 29 May	Level	Starts	Ends	Venue
The Pale Baron *	P4-S2	10:00	11:15	Traverse 1
Not Falling	P1-P6	10:15	11:05	Dance Base
Game within a Game	Nursery-P3	10:30	11:10	Assembly Roxy
When the World Turns	P1-S6	10:30	11:30	Lyra
Tongue Twister *	P2-P7	10:45	11:45	North Edinburgh Arts
Tiébélé	Nursery-P2	11:00	11:40	Lyceum Studio
Beneath the Snow	Nursery-P2	11:15	12:00	Traverse 2
Not Falling	P1-P6	12:45	13:35	Dance Base
The Pale Baron *	P4-S2	13:00	14:15	Traverse 1
Beneath the Snow	Nursery-P2	13:30	14:15	Traverse 2
The Show for Young Men *	P4-S2	13:30	14:30	The Studio @ Capital Theatres
Game within a Game	Nursery-P3	13:30	14:10	Assembly Roxy
When the World Turns	P1-S6	13:30	14:30	Lyra
Tongue Twister *	P2-P7	13:45	14:45	North Edinburgh Arts
Tiébélé	Nursery-P2	13:45	14:25	Lyceum Studio
The Show for Young Men	P4-S2	18:00	18:50	The Studio @ Capital Theatres

Fri 30 May	Level	Starts	Ends	Venue
The Pale Baron *	P4-S2	10:00	11:15	Traverse 1
Not Falling	P1-P6	10:15	11:05	Dance Base
The Show for Young Men *	P4-S2	10:30	11:30	The Studio @ Capital Theatres
Game within a Game	Nursery-P3	10:30	11:10	Assembly Roxy
Double You *	P2-S1	10:30	11:40	Portobello Hall
Tongue Twister **	P2-P7	10:45	11:45	North Edinburgh Arts
Beneath the Snow	Nursery-P2	11:00	11:45	Traverse 2
Not Falling	P1-P6	14:00	14:50	Dance Base
Game within a Game	Nursery-P3	16:00	16:40	Assembly Roxy
Double You	P2-S1	19:00	20:00	Portobello Hall
The Pale Baron	P4-S2	19:30	20:35	Traverse 1

Edinburgh International

Children's Festival

24 May – 1 June 2025

0131 225 8050

www.imagine.org.uk

 /EdChildrensFest  @imagineUK  @EdChildrensFest  @imagineUK

#EdChildrensFest



ALBA | CHRUTHACHAIL

• EDINBURGH •
THE CITY OF EDINBURGH COUNCIL



Scottish Government
Riaghaltas na h-Alba
gov.scot



Art direction: Alphabet Studio
Programme design: Tom Holmes