

**Schools
programme**

Edinburgh International
**Children's
Festival**
30 May – 7 June 2026



www.imagnate.org.uk

Welcome!

We look forward to welcoming you to the 2026 Festival programme which once again, will provide rich, interdisciplinary learning experiences for pupils and opportunities for interesting discussions in the classroom.

The Festival's 36th edition showcases an impressive line-up of 14 productions from 9 different countries, with a special focus on Wallonia, the French-speaking region of Belgium, and 5 productions from Scotland. It will also feature works by disabled artists including a commission by acclaimed choreographer Marc Brew and a new play by writer and theatre-maker Ross MacKay.

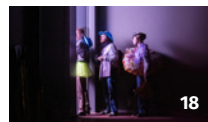
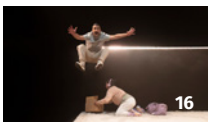
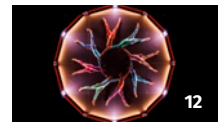
As well as offering moments of joy and wonderment, the programme covers themes ranging from our relationship with the natural environment to our capacity for resilience in the face of adversity.

We can't wait to share these shows with you and your pupils!

The Imagine team

P.S. 2026 will be an exciting new chapter at Imagine as we bid farewell to Noel Jordan who leaves his post after 10 years and welcome new Festival Director Adjijima Na Patalung from Thailand.

Programme at a glance



6 reasons to attend the festival

Relevance for the Curriculum

- ★ Provides rich, interdisciplinary learning experiences exploring storytelling, emotions and creativity (Expressive Arts)
- ★ Develops critical thinking, listening and communication skills (Literacy)
- ★ Increases empathy and social skills by connecting with characters and narratives (Health and Wellbeing)

Equal opportunities

- ★ Reduces cultural and economic barriers and ensures access for those who might not otherwise attend
- ★ Creates shared cultural references between pupils
- ★ Helps young people feel part of wider cultural community

Cultural enrichment

- ★ Exposes pupils to high-quality live performances
- ★ Broadens cultural horizons and understanding of the world
- ★ Provides joyful and profound experiences

Skills development

- ★ Helps develop meta-skills including curiosity, creativity, focus and communication
- ★ Develops critical thinking through discussion of performances
- ★ Encourages listening, dialogue and reflection

Social and emotional development

- ★ Helps support collaborative working amongst pupils
- ★ Improves communication skills and emotional intelligence
- ★ Increases self-esteem and confidence

Inspiration and aspiration

- ★ Raises children's aspirations and hopes for their future
- ★ Sparks creativity and imagination
- ★ Provides memorable learning experiences outside the classroom

"My class absolutely loved their experience at the festival. I am delighted that we were able to give them this opportunity, as going to a live performance is vital for their personal development and many had never been to a theatre before."

Teacher, 2025 Festival

What we offer

- **Low ticket prices – £6 per pupil (same since 2015)**
- **Up to 100% travel subsidy**
- **Links to the curriculum with detailed E&Os**
- **Q&A sessions after performances**
- **Learning resources including an interactive digital tool**
- **Help with children/adult ratios if needed**

Free ticket allowance and travel subsidy

| | No of children | Free adult | Travel subsidy |
|------------------------|----------------|--------------|---------------------------------|
| State schools | for 10 pupils | 1 free adult | 70% refund of coach hire |
| State nurseries | for 5 pupils | 1 free adult | 100% refund of public transport |
| Special schools | for 3 pupils | 1 free adult | 100% refund of travel cost |

As part of our Environmental Policy, we strongly encourage local schools to walk to venues whenever possible.

Accessibility

Imagine has a strong commitment to accessibility and equality, and we will try and accommodate all access requirements.

- There are coach drop-off points near all venues.
- All venues are wheelchair accessible but each have limited numbers of wheelchair spaces.
- Some of our venues will have a dedicated relaxed quiet space.
- Children with additional support needs can attend any of our performances but some shows are more suitable than others for those with complex needs.
- Let us know if you have pupils with access needs (including sight or hearing loss) so we can accommodate them.
- A Festival volunteer will meet and assist all groups on arrival.

R Relaxed performance: *The Unlikely Friendship* (Thu 4 Jun 13:45)

👤 BSL performances: *Boys Don't Dance* (every performance)

CCAP Captioned performances: *Boys Don't Dance* (every performance)

Please contact us for advice on the above and let us know about any access needs on your booking form.

How to book



1 Select the shows

Select the shows you would like to attend. Please also provide alternatives as some shows have limited capacity.

2 Date and Times

Let us know which dates/times you **cannot** make so we can try and accommodate your group(s).

3 Complete a booking form

Either book online or download a booking form on our website: www.imagine.org.uk/festival/schools

If booking multiple groups, you can also use [this spreadsheet](#).

4 Send your booking form

- Complete your booking form online at www.imagine.org.uk/festival/schools
- Email your booking to schools@imagine.org.uk
- Post your booking to Schools Booking, Imagine, 30B Grindlay Street, Edinburgh EH3 9AX

Make sure you send your booking form by 16 January to be considered in our first round of ticket allocations. If we can't accommodate your booking, we will contact you to look at alternatives.

For further help or to check availability, please contact our schools booking coordinator on **0131 225 8050** or email schools@imagine.org.uk



Nursery (2yrs) – P2

Walangaan

Lyceum Studio

Wed 3 Jun 13:00, 16:30

Thu 4 Jun 11:00, 13:00

Fri 5 Jun 09:30, 11:00

Duration: 40 minutes

Seating: Benches and cushions

School capacity: 52/show

No text

Curriculum for Excellence links:

The show offers a fun, practical way to learn about water, nature and the world around us.

Through music, movement and play, children explore science and the environment in a way that's easy to understand and remember. It supports early learning, encourages curiosity and creativity, and helps pupils appreciate how important water is to all life.

Science, Expressive Arts, Health and Wellbeing

Théâtre de la Guimbarde

Belgium/Senegal

Walangaan – flowing water in Wolof – tells the story of the water cycle. Water that quenches, water that trickles over the skin, water that splashes, water that cleanses, water that sings, water that rocks, water that gushes. And water that, sometimes, increasingly, runs out.

A singer and a percussionist from Senegal follow the course of the water, revealing its sounds and playing with their voices and bodies, from the drop to the downpour, from the splash to the waterfall. Little by little, to the sound of the handpan, they build a small enchanted world of fountains, basins, faucets, and pourers – a luminous universe that reflects the gentle sensation of a baby's first bath and becomes the mirror of intimate emotions.



Wow!

BonteHond
The Netherlands

Wow! is a physical and musical performance that reveals the world through the eyes of toddlers, who delight in everyday objects and situations.

Ordinary things that appear mundane or challenging turn out to be much more interesting, exciting, and beautiful than we initially think.

Using colourful and multi-sized honeycomb paper books that unfold like fans or accordions, the performers explore endless possibilities, inviting us into their world of play, wonder and delight.

“The performers have a wonderful chemistry... evident in their interaction with the paper worlds they create...”

Theaterkrant

Nursery (2.5yrs) – P2

North Edinburgh Arts

Wed 3 Jun 10:00, 11:30, 13:30

Thu 4 Jun 10:30, 12:00

Fri 5 Jun 10:30, 14:00, 16:30

Duration: 35 minutes
(+ 10 min stay and play)

Seating: Theatre seating

School capacity: 52/school

No text

Curriculum for Excellence links:

The show encourages children to notice the wonder in everyday things. Using music, movement and play, the performers spark curiosity and imagination, helping pupils explore how simple objects can inspire big ideas. It supports creativity, observation and early learning in a joyful, hands-on way that makes discovery exciting and fun.

Expressive Arts, Health and Wellbeing, Literacy



Nursery (3yrs) – P2

Studio Theatre

Fri 5 Jun 10:30, 14:30

Duration: 35 minutes

Seating: Theatre Seating

School capacity: 130/show

No text

Curriculum for Excellence links:

The show is a story about friendship, teamwork and self-discovery. Through acrobatics, juggling and play, children see how cooperation and individuality can both shine. It supports social and emotional learning, builds confidence and celebrates the fun of working and growing together.

Health and Wellbeing, Expressive Arts, Physical Education

The Fabulous Tale of Basarkus

Company Lamento and L' Académie Fratellini
France

The Fabulous Tale of Basarkus is a dazzling display of juggling and acrobatics.

Basarkus is like no other creature. He has two heads and many arms and several legs. He is happy playing the guitar with four hands, rolling about and juggling.

But Basarkus isn't one but two! As the performers realise they are separable, they start exploring their own special talent, as acrobat and juggler. Like inquisitive children, they learn from each other and form new mischievous combinations. Their games help them discover their own body and identity, and the wonder of growing up.

“An exciting creation that is a great success with young and old alike”

Paris Mômes



In Time

Teater Refleksion, Andy Manley and De Røde Heste
Denmark and Scotland

Co-produced with Catherine Wheels, in association with Randers Teater

One seed, two men – three lives and a budding beginning.

Two men need to look after a tiny seed; it is their job to nurture this small life and help it blossom. But as every new parent knows, this is no easy task.

When a sheep wants to nibble its leaves, how do you protect it?

When techno tracks replace lullabies, how do you accept the change?

And as the seedling becomes a sapling and needs to branch out, how do you let go?

In Time is a playful, gentle, and highly visual show that through humour and absurdist touches, shares the joys and frustrations of parenting a new life.

Nursery (3yrs) – P3

Traverse Theatre 2

Mon 1 Jun 09:45, 11:45

Tue 2 Jun 09:45, 11:45

Wed 3 Jun 13:30, 17:30

Thu 4 Jun 09:45, 11:45

Duration: 40 minutes

Seating: Theatre seating

School capacity: 45–60/show

No text

Curriculum for Excellence links:

The story gently explores nature, growth and change. A beautiful way to connect classroom learning about nature, life cycles and caring for others with the wonder of live performance.

Science, Expressive Arts, Health and Wellbeing



P1 – P6

Gretel

Assembly Roxy

Tue 2 Jun 10:00

Wed 3 Jun 13:45

Thu 4 Jun 10:00

Fri 5 Jun 14:45

Duration: 50 minutes + Q&A

Seating: Theatre seating

School capacity: 107/show

No text

Curriculum for Excellence links:

The show encourages children to notice the wonder in everyday things. Using music, movement and play, the performers spark curiosity and imagination, helping pupils explore how simple objects can inspire big ideas. It supports creativity, observation and early learning in a joyful, hands-on way that makes discovery exciting and fun.

Health and Wellbeing, Social Studies, Expressive Arts, Literacy

Quattro4 Company

Italy

Gretel lives in a tiny house, surrounded by small and precious objects: a tray, a teapot, a plant, a stool to sit on. She is absent-minded but rigorous, meticulously sticking to her bizarre logic in a world where everything is out of scale and out of place.

But a catastrophe suddenly destroys her home, and Gretel must make her new path alone.

Inspired by fairy tale themes of loss and the search for home, the performer blends contemporary circus, dance, and the manipulation of objects to celebrate migration and the need for reinventing ourselves when everything falls apart.

It is a joyful and profound reflection on the meaning of home and a tribute to determination and perseverance.

“In addition to her clowning and object manipulation skills, Clara Storti is a top-notch aerial rope artist”

Hystrio

Cheeky Zippy Violette

Théâtre des 4 Mains / La Datcha
Belgium

Sent to the attic to think things over, Violette find herself surrounded by memories of her grandpa: his farewell party, the scary stories he used to tell her at night and even their crazy pickle recipes.

So she decides to send him a letter to the moon, to tell him about the intense emotions and questions that make up her daily life. Where do you go when you're dead? Can you have two crushes at once? Since I can see the moon, does that mean it's closer than Spain?

From sea storms to lunar landings, Violette dives into her wild imagination with humour and tenderness to bring everyday objects to life, and draws the audience into accomplices in her whirlwind adventure.

“Elevates mischief to art”

Le Soir

P1 – P6

Scottish Storytelling Centre

Thu 4 Jun 10:15, 13:15

Fri 5 Jun 09:45, 15:30

Duration: 55 minutes + Q&A

Seating: Theatre seating

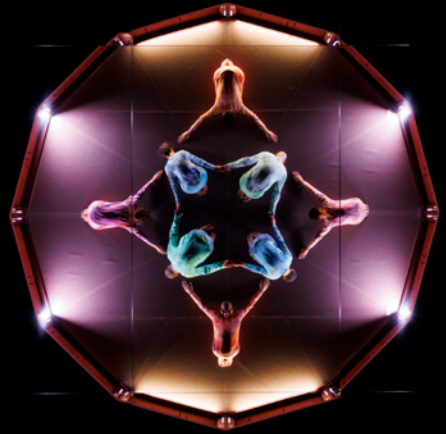
School capacity: 80/show

Warning: Strobe lighting (short time). A little bit of smoke.

Curriculum for Excellence links:

A playful and imaginative story that supports classroom learning about emotions, creativity and the big questions of growing up.

Health and Wellbeing, Literacy, Expressive Arts, Religious and Moral Education



P1 – P7

Mirkids

Studio Theatre

Mon 1 Jun 09:45, 12:00

Duration: 45 minutes + Q&A

Seating: Lying on the floor
(Those who are unable to lie down can watch the show on a chair with a hand mirror to reflect the large mirror on the ceiling)

School capacity: 60/show

No text

Prototype Status / Cie Jasmine Morand
 Switzerland

Mirkids is a feast for the eyes and the imagination. The audience lies on the stage around a cylindrical structure, gazing at a suspended mirror and glimpsing dancers reflected on its surface. Here an arm, there a leg, disconnected and multiplied. In sync, with a geometric rhythm, body parts create mesmerising shapes like the vibrant patterns of a kaleidoscope: symmetrical, fluid, enigmatic and forever-changing.

This stunning dance production is a fascinating visual spectacle that fires our imagination and invites us to marvel at what (literally) unfolds before us.

Curriculum for Excellence links:

The show invites pupils to look differently at the world around them, connecting art, science and imagination in a unique sensory experience that celebrates pattern, perception, and the beauty of movement.

Expressive Arts, Science, Mathematics, Health and Wellbeing

“A star-studded ballet, created specially for children”

Bezons Info

Everything/ Nothing

MODO GROSSO

Belgium

How can we make people see, feel and grasp the passing of time using movements?

Circus artist Alexis Rouvre takes up this challenge in his circus of objects. Juggler of time, rather than gravity, he manipulates a variety of simple materials to astonishing effect. Using chains, needles and wool, volcanic stones, sand and magnets, he creates a poetic work of wonder which defies the laws of physics. A magical ballet of hanging objects, flying and tumbling down.

P3 – P7

Traverse Theatre 2

Fri 5 Jun 10:15, 17:30

Duration: 55 minutes + Q&A

Seating: Theatre seating

School capacity: 75/show

No text

Curriculum for Excellence links:

The show offers a captivating blend of science, art and imagination. The performer invites pupils to see the invisible, to wonder how movement and time connect, inspiring curiosity across both science and the arts.

Science, Mathematics, Expressive Arts, Health and Wellbeing



P3 – S2

The Unlikely Friendship of Feather Boy and Tentacle Girl

Assembly Roxy

Mon 1 Jun 11:00

Tue 2 Jun 13:45

Wed 3 Jun 10:15

Thu 4 Jun 13:45*

Fri 5 Jun 10:30

* Relaxed performance **R**

Duration: 50 minutes + Q&A

Seating: Theatre seating

School capacity: 100/show

Curriculum for Excellence links:

The show is a breathtaking celebration of science and art in motion, inviting pupils to explore the physics of flight, balance and counterbalance, while reflecting on the power of belonging.

Health and Wellbeing, Sciences, Physical Education, Expressive Arts, Literacy

Vee Smith & Sadiq Ali

Scotland

Produced by Catherine Wheels, commissioned by Imaginea, created in association with National Theatre of Scotland and supported by Assembly

Two friends perform a breathtaking aerial show. They fly, spin, hang from the rooftops and fall out of the sky... But they weren't always so glorious. How did they transform from feeling like outsiders to the fantastical creatures they always knew they had inside them?

A touching story of a girl who wants to be a monster and a boy who wants to fly. This dynamic and visually stunning aerial show explores the universal yearning to belong and the joy of friendship.

“Beautifully poetic and thought-provoking”

British Theatre Guide



Boys Don't Dance

P4 –S1

Marc Brew Company
Scotland

*Commissioned by Imagine, in partnership with
Aberdeen Performing Arts*

Boys Don't Dance is a poignant dance theatre show by acclaimed disabled artist Marc Brew, reflecting on his journey as a boy who defied society's expectations to embrace his love for dance.

The performance unfolds through a tapestry of memories, shedding light on the loneliness of being the only boy in a rural Australian town who dared to dance. The production will combine movement, storytelling, lighting and an uplifting soundtrack, alongside visual projections and animation to reflect Marc's inner journey and create an immersive experience for young audiences.

Boys Don't Dance celebrates individuality and the liberating power of dance, encouraging audiences to embrace their unique passions and find strength in their differences.

*Supported by the Scottish Government's Festivals
Expo Fund, development funded by Creative Scotland.*

Traverse Theatre 1

Mon 1 Jun 12:30
Tue 2 Jun 10:15, 13:15
Wed 3 Jun 10:15, 13:00

Duration: 60 minutes + Q&A

Seating: Theatre seating

School capacity: 177/show

Little text

Access: Integrated BSL
and captioning



Curriculum for Excellence links:

The show is a true story of challenging stereotypes and exploring identity, resilience, and emotional wellbeing. Through its striking use of storytelling, movement and media, it sparks discussion and inspires creative reflection in and beyond the classroom.

*Health & Wellbeing, Expressive
Arts, Literacy and English,
Technologies*



P6 – S3

Toto Kerblammo!

Studio Theatre

Tue 2 Jun 13:15, 19:00

Wed 3 Jun 13:15, 19:00

Thu 4 Jun 10:00, 13:00

Duration: 70 minutes + Q&A

Seating: Theatre seating

School capacity: 75/show

Curriculum for Excellence links:

The show offers a unique and immersive theatre experience, linking strongly with the curriculum through live action. The performance, experienced through 3D binaural sound, encourages pupils to explore emotion, empathy and the science of sound.

Health and Wellbeing, Sciences, Literacy, Expressive Arts, Technologies

Unicorn Theatre

England

Poor Effy. Sent to live with her aunt and uncle in a block that won't allow dogs. What's a girl to do? She smuggles her furry friend in, of course. Keeps him under a blanket. Feeds him biscuits. Ssh Toto, quiet. But it can't last forever. Effy needs saving. And Toto is up to the task.

Tim Crouch's powerful new play is a tender and powerful story about listening, friendship and finding hope in the darkest of places.

Wearing headphones, the audience will experience Effy's world through 3D binaural audio technology. Immerse yourself in a compelling live mix of sound and action and discover the sound of things you never knew had sounds.

“Brave, moving, inventive and steadfastly emotionally truthful”

Time Out ★★★★★



Cringe

Ross McKay and Scottish Theatre Producers
Scotland

It's Reid Aitken's first day of high school and he just wants to vanish. When an embarrassing incident spirals into a legend known only as "The Creeping Snake," Reid finds himself at the centre of the cruellest joke in school.

Suddenly, the question isn't how to disappear – it's how to survive, and who will stand beside you when everything feels impossible.

Fast-paced, funny, and painfully true, *Cringe* is a story about surviving the minefield of growing up, standing up to bullies, and finding the friend who makes you braver than you ever thought you could be.

“So beautiful, complex and nuanced, with just the right dose of humour”

Delegate feedback from 2025 script reading

P6 – S3

Scottish Storytelling Centre

Mon 1 Jun 10:00, 13:00

Tue 2 Jun 10:00, 13:00

Wed 3 Jun 10:00

Duration: 60 minutes + Q&A

Seating: Theatre seating

School capacity: 75/show

Curriculum for Excellence links:

Cringe is a sharp and funny look at the chaos of growing up, fitting in and finding your voice. The show opens up rich discussions around friendship, empathy and self-confidence. It is an engaging and relevant experience that resonates deeply with the challenges young people face today.

Health & Wellbeing, Literacy and English, Expressive Arts, Technologies

P7 – S3

Traverse Theatre 1**Thu 4 Jun** 18:30**Fri 5 Jun** 10:00, 19:00**Duration:** 80 minutes + Q&A**Seating:** Theatre seating**School capacity:** 185/show**Warning:** Strobe lighting and loud music. Optional audience participation.**Curriculum for Excellence links:**

This show is a striking exploration of belonging, alienation and the search for connection, inviting pupils to think deeply about how we find our place in the world and the courage it takes to stand outside the crowd.

Health and Wellbeing, Literacy, Expressive Arts, Social Studies

It Would Be Such a Shame if You Missed Out

Theater Artemis & Theater Basel
Netherlands

Do you ever feel that you're missing out? That life is happening outside of your control? Because sometimes life feels like one big, thumping, steaming party, that you can't find the entrance to. You hear the bass, but where's the music coming from?

Three characters search for a party they wish they could attend in a cold and deserted industrial estate. Everyone else seems to know exactly where to go. Or are those just ghosts in their head?

The creators of the 2019 Festival sell-out show *Invisible Man* returns with an absurdist play full of humour where the most unexpected events take place on stage, and to everyone's delight... with the audience!



Brrr

Hayley Earlam
Scotland

Brrr is a multi-sensory installation and dance performance for young audiences with complex needs. Set within an inflatable dome, *Brrr* is an immersive exploration of winter featuring dance, sound, video, and lots and lots of snow!

Created in collaboration with young people and a team of artists specialising in inclusive practice, the performance is tailored to meet the specific needs of each audience member, who have the freedom to engage in their own way and at their own pace with the shimmering winter landscape.

Brrr is an unforgettable encounter where needs are not only accommodated but celebrated. The performance is suitable for those with Profound and Multiple Learning Disabilities (PMLD), Autistic and neurodivergent individuals, and wheelchair users or other mobility aid users. It features minimal to no language, so is suitable for non-verbal and Deaf audiences.

ASN (10+ yrs)

Lyra

Mon 1 Jun 10:00, 11:20, 13:30

Tue 2 Jun 10:00, 11:20, 13:30

Wed 3 Jun 10:00, 11:20, 13:30

Thu 4 Jun 10:00, 11:20, 13:30

Duration: 50 min

(+ 10 min for further exploratory time inside the dome)

Seating: A variety of soft and sensory-based seating options

School capacity: 8 children + carers/show

Warning: Aromatherapy oils (spearmint)

Curriculum for Excellence links:

The show offers a gentle, magical environment where movement, sound and light combine to create an experience that is both engaging and inclusive. This performance is a unique opportunity for ASN pupils to explore sensory learning, emotional connection and the joy of creativity.

Health and Wellbeing, Expressive Arts, Science, Technologies

Making the most of your visit

A visit to the Festival is a very special occasion for school pupils. Make it even more meaningful and enriching!

onTAP, our free digital learning resource has lots of activities to facilitate discussions with children before and after a show. We've outlined some below. Go to imagine.org.uk/ontap and it will take you through what to do.

Q&As with the performing company take place straight after the show for all performances aimed at primary / secondary pupils. A great way to gain first-hand insight into artists' creative process.

Before the show

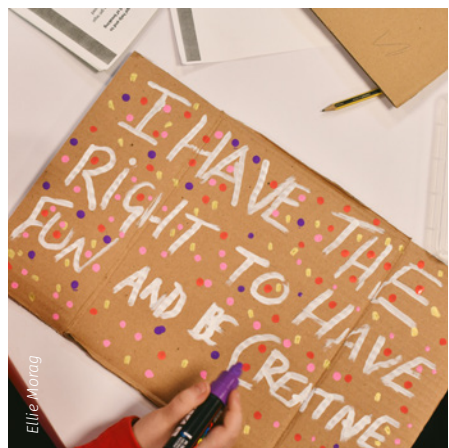
Pre-show preparation is a key part of the journey. Pupils who know what to expect, arrive at the theatre feeling excited and confident and are more likely to stay focused and make meaningful connections between the show and their broader learning.

- **Imagining the show:** Using just the title and image, discuss what the show might be like.
- **Themes:** Talk to your class about the storyline, characters and themes of the show.
- **Design a poster:** Ask pupils to create their own poster. Identify if there are common themes? If so, why are they important?

After the show

Post show discussions and activities give space for pupils to process what they've experienced in the theatre. They help children develop reflection skills, articulate their opinions and enhance their confidence. They also extend the impact of the visit beyond just 'a nice day out' and help you link-up to any relevant curriculum work.

- **Hot Seat:** Ask a pupil to imagine they are one of the show's characters. Ask who they are, what they did and why.
- **Voting:** Get pupils to vote on criteria such as performance, production value, narrative etc.
- **Memory box:** Ask pupils to write everything they remember about the show and put it in a decorated box.



Company credits

Walangaan: In co-production with the European project Mapping. In collaboration with BAAT (Bureau Africain des Arts et Techniques), Yénné, Senegal. With the support of Fédération Wallonie-Bruxelles and Pierre de Lune, Centre scénique jeune public de Bruxelles. Thanks to WBI for the transport costs.

Wow!: Ministerie van Onderwijs, Cultuur en Wetenschap (The Ministry of Education, Culture and Science), Gemeente Almere (The municipality in Almere) en Provincie Flevoland (Province of Flevoland).

The Fabulous Tale of Basarkus: Supported by La Rampe Echirolles, Théâtre du Beauvaisis in Beauvais, Transversales Verdun, Houdremont La Courneuve, Espace Périphérique Paris, Théâtre des Bergeries in Noisy-le-Sec, l'Etat- Préfet d'Auvergne-Rhône-Alpes Direction Régionale des Affaires Culturelles, Isère departement and Grenoble City.

In Time: supported by The Danish Arts Foundation, Creative Scotland, Municipality of Aarhus, Lemvig-Müller Fonden, Louis-Hansen Fonden, NRGI Fonden, C.A.C. Fonden, Aarhus Stiftstidendes Fond

Gretel: supported by RSGT/FLIC – Residenza Surreale, Dinamico Festival, Circo all'inCirca, Fabbrica C – Puntata Zero, Spiazzo_ Circo fuori dal vaso With the contribution of NEXT ed. 2022 / 2023, Regione Lombardia and Fondazione Cariplo

Cheeky Zippy Violette: Federation Wallonie Bruxelles, Province du Brabant Wallon, WBI, WBTD

Mirkids: État de Vaud, Ville de Vevey, Loterie Romande, Pro Helvetia, Fondation Ernst Göhner, Fondation Sandoz, Pour-cent culturel Migros, Fonds culturel de la SSA, Fonds culturel Riviera, Fondation Corymbo, Fondation Lombard Odier

Everything/Nothing: Supported by Wallonie Bruxelles International (BE) / Bourse Écriture en Campagne / Latitude 50 / La Chauferrière-Acte1 / la SACD et la SSA (BE) / Iportunus – Creative Europe Programme / LookIN'OUT (BE). With the help of the Fédération Wallonie Bruxelles, Service Général de la Création Artistique - Service des Arts Forain, du Cirque et de la Rue.

The Unlikely Friendship: Development funded by Creative Scotland.

Cringe: Supported by: Creative Scotland; Imagine; OneRen; Aberdeen Performing Arts

It Would Be Such a Shame if You Missed Out: Supported by the Ministry of Education, Culture and Science, the Province of North Brabant, and the Municipality of 's-Hertogenbosch.

Brrr: Created in association with Capital Theatres, with support from Creative Scotland, the Royal Conservatoire of Scotland's Innovation Studio, and The Work Room's Residency Programme. Developments supported by Imagine, Scottish Dance Theatre, and through the LoveDanceScotland bursary.

Venue information

Assembly Roxy

2 Roxburgh Pl, Edinburgh EH8 9SU
www.assemblyroxy.com

Lyra

11 Harewood Rd, Edinburgh EH16 4NT
www.lyratheatre.co.uk

North Edinburgh Arts

15a Pennywell Court, Edinburgh, EH4 4TZ
www.northedinburgharts.co.uk

Studio Theatre

22 Potterrow, Edinburgh EH8 9BL
www.capitaltheatres.com

Traverse Theatre

10 Cambridge Street, Edinburgh EH1 2ED
www.traverse.co.uk

Lyceum Studio

30B Grindlay Street, Edinburgh EH3 9AX
lyceum.org.uk

Scottish Storytelling Centre

43-45 High Street, Edinburgh EH1 1SR
www.scottishstorytellingcentre.com

School Festival diary

| Mon 1 Jun | Level | Starts | Ends | Venue |
|--|---------------|--------|-------|------------------------------|
| In Time | Nursery – P3 | 09:45 | 10:25 | Traverse 2 |
| Mirkids | P1 – P7 | 09:45 | 10:30 | Studio Theatre |
| Cringe | P6 – S3 | 10:00 | 11:00 | Scottish Storytelling Centre |
| Brrr | ASN (10 yrs+) | 10:00 | 10:50 | Lyra |
| The Unlikely Friendship... | P3 – S2 | 11:00 | 11:50 | Roxy |
| Brrr | ASN (10 yrs+) | 11:20 | 12:10 | Lyra |
| In Time | Nursery – P3 | 11:45 | 12:25 | Traverse 2 |
| Mirkids | P1 – P7 | 12:00 | 12:45 | Studio Theatre |
| Boys Don't Dance  | P4 – S1 | 12:30 | 13:30 | Traverse 1 |
| Cringe | P6 – S3 | 13:00 | 14:00 | Scottish Storytelling Centre |
| Brrr | ASN (10 yrs+) | 13:30 | 14:20 | Lyra |

| Tue 2 Jun | Level | Starts | Ends | Venue |
|--|---------------|--------|-------|------------------------------|
| In Time | Nursery – P3 | 09:45 | 10:25 | Traverse 2 |
| Gretel | P1 – P6 | 10:00 | 10:50 | Roxy |
| Cringe | P6 – S3 | 10:00 | 11:00 | Scottish Storytelling Centre |
| Brrr | ASN (10 yrs+) | 10:00 | 10:50 | Lyra |
| Boys Don't Dance  | P4 – S1 | 10:15 | 11:15 | Traverse 1 |
| Brrr | ASN (10 yrs+) | 11:20 | 12:10 | Lyra |
| In Time | Nursery – P3 | 11:45 | 12:25 | Traverse 2 |
| Cringe | P6 – S3 | 13:00 | 14:00 | Scottish Storytelling Centre |
| Boys Don't Dance  | P4 – S1 | 13:15 | 14:15 | Traverse 1 |
| Toto Kerblammo! | P6 – S3 | 13:15 | 14:25 | Studio Theatre |
| Brrr | ASN (10 yrs+) | 13:30 | 14:20 | Lyra |
| The Unlikely Friendship... | P3 – S2 | 13:45 | 14:35 | Roxy |
| Toto Kerblammo! | P6 – S3 | 19:00 | 20:10 | Studio Theatre |

| Wed 3 Jun | Level | Starts | Ends | Venue |
|--|---------------|--------|-------|------------------------------|
| Wow! | Nursery – P2 | 10:00 | 10:45 | North Edinburgh Arts |
| Cringe | P6 – S3 | 10:00 | 11:00 | Scottish Storytelling Centre |
| Brrr | ASN (10 yrs+) | 10:00 | 10:50 | Lyra |
| Boys Don't Dance  | P4 – S1 | 10:15 | 11:15 | Traverse 1 |
| The Unlikely Friendship... | P3 – S2 | 10:15 | 11:05 | Roxy |
| Brrr | ASN (10 yrs+) | 11:20 | 12:10 | Lyra |
| Wow! | Nursery – P2 | 11:30 | 12:15 | North Edinburgh Arts |
| Walangaan | Nursery – P2 | 13:00 | 13:40 | Lyceum Studio |
| Boys Don't Dance  | P4 – S1 | 13:00 | 14:00 | Traverse 1 |
| Toto Kerblammo! | P6 – S3 | 13:15 | 14:25 | Studio Theatre |



BSL



Captioned



Relaxed performance

| ...continued | Level | Starts | Ends | Venue |
|-----------------|---------------|--------|-------|----------------------|
| In Time | Nursery – P3 | 13:30 | 14:10 | Traverse 2 |
| Wow! | Nursery – P2 | 13:30 | 14:15 | North Edinburgh Arts |
| Brrr | ASN (10 yrs+) | 13:30 | 14:20 | Lyra |
| Gretel | P1 – P6 | 13:45 | 14:35 | Roxy |
| Walangaan | Nursery – P2 | 16:30 | 17:10 | Lyceum Studio |
| In Time | Nursery – P3 | 17:30 | 18:10 | Traverse 2 |
| Toto Kerblammo! | P6 – S3 | 19:00 | 20:10 | Studio Theatre |

| Thu 4 Jun | Level | Starts | Ends | Venue |
|--|---------------|--------|-------|----------------------|
| In Time | Nursery – P3 | 09:45 | 10:25 | Traverse 2 |
| Gretel | P1 – P6 | 10:00 | 10:50 | Roxy |
| Toto Kerblammo! | P6 – S3 | 10:00 | 11:10 | Studio Theatre |
| Brrr | ASN (10 yrs+) | 10:00 | 10:50 | Lyra |
| Cheeky Zippy Violette | P1 – P6 | 10:15 | 11:10 | Storytelling |
| Wow! | Nursery – P2 | 10:30 | 11:15 | North Edinburgh Arts |
| Walangaan | Nursery – P2 | 11:00 | 11:40 | Lyceum Studio |
| Brrr | ASN (10 yrs+) | 11:20 | 12:10 | Lyra |
| In Time | Nursery – P3 | 11:45 | 12:25 | Traverse 2 |
| Wow! | Nursery – P2 | 12:00 | 12:45 | North Edinburgh Arts |
| Walangaan | Nursery – P2 | 13:00 | 13:40 | Lyceum Studio |
| Toto Kerblammo! | P6 – S3 | 13:00 | 14:10 | Studio Theatre |
| Cheeky Zippy Violette | P1 – P6 | 13:15 | 14:10 | Storytelling |
| Brrr | ASN (10 yrs+) | 13:30 | 14:20 | Lyra |
| The Unlikely Friendship...  | P3 – S2 | 13:45 | 14:35 | Roxy |
| It Would Be Such a Shame | P7 – S3 | 18:30 | 19:50 | Traverse 1 |

| Fri 5 Jun | Level | Starts | Ends | Venue |
|-------------------------------|--------------|--------|-------|----------------------|
| Walangaan | Nursery – P2 | 09:30 | 10:10 | Lyceum Studio |
| Cheeky Zippy Violette | P1 – P6 | 09:45 | 10:40 | Storytelling |
| It Would Be Such a Shame | P7 – S3 | 10:00 | 11:20 | Traverse 1 |
| Everything/Nothing | P3 – P7 | 10:15 | 11:10 | Traverse 2 |
| The Fabulous Tale of BasarKus | Nursery – P3 | 10:30 | 11:05 | Studio Theatre |
| The Unlikely Friendship... | P3 – S2 | 10:30 | 11:20 | Roxy |
| Wow! | Nursery – P2 | 10:30 | 11:15 | North Edinburgh Arts |
| Walangaan | Nursery – P2 | 11:00 | 11:40 | Lyceum Studio |
| Wow! | Nursery – P2 | 14:00 | 14:45 | North Edinburgh Arts |
| The Fabulous Tale of BasarKus | Nursery – P3 | 14:30 | 15:05 | Studio Theatre |
| Gretel | P1 – P6 | 14:45 | 15:35 | Roxy |
| Cheeky Zippy Violette | P1 – P6 | 15:30 | 16:25 | Storytelling |
| Wow! | Nursery – P2 | 16:30 | 17:15 | North Edinburgh Arts |
| Everything/Nothing | P3 – P7 | 17:30 | 18:25 | Traverse 2 |
| It Would Be Such a Shame | P7 – S3 | 19:00 | 20:20 | Traverse 1 |


Edinburgh International
**Children's
Festival**


30 May – 7 June 2026


0131 225 8050

www.imagine.org.uk

 @EdChildrensFest

 /EdChildrensFest

 @imagineUK

 /edchildrensfest

#EdChildrensFest



ALBA | CHRUTHACHAIL

• EDINBURGH •
THE CITY OF EDINBURGH COUNCIL



Scottish Government
Riaghaltas na h-Alba
gov.scot

The Nancie Massey Charitable Trust, WM Mann Foundation, Cruden Foundation,
John Watson's Trust, Stevenston Charitable Trust

Art direction: Alphabet Studio

Programme design: Tom Holmes